



**Water Monitoring Result at C1 - HKCEC Extension
Mid-Flood Tide**

Date	Time	Weather Condition	Sampling Depth		Water Temperature			pH			Salinity			DO Saturation			DO		Turbidity			Suspended Solids		
					°C		-		ppt		%		mg/L		NTU		mg/L							
			m	Value	Average	Value	Average	Value	Average	Value	Average	Value	Average	Value	Average	Value	Average	Value	Average	Value	Average			
27/12/18	11:05	Cloudy	Middle	3.0	20.90	20.90	20.90	7.31	7.31	7.31	33.38	33.38	33.38	67.8	68.9	69.1	4.98	5.06	5.08	4.80	4.81	4.80	7	7.50
	11:07		Middle	3.0	20.90	20.90		7.31	7.31		33.38	33.38		69.7	70.0		5.12	5.14		4.80	4.80		8	
29/12/18	9:50	Fine	Middle	2.5	19.60	19.60	19.50	7.07	7.07	7.07	33.60	33.60	33.60	72.1	72.3	71.9	5.43	5.44	5.43	4.76	4.77	4.79	6	6.00
	9:52		Middle	2.5	19.40	19.40		7.07	7.07		33.60	33.60		71.6	71.6		5.40	5.46		4.81	4.81		6	
31/12/18	14:50	Fine	Middle	3.0	18.90	18.90	18.90	6.87	6.87	6.87	33.80	33.80	33.80	75.8	76.4	76.5	5.76	5.80	5.81	3.40	3.40	3.40	6	6.00
	14:52		Middle	3.0	18.90	18.90		6.87	6.87		33.80	33.80		76.9	76.8		5.84	5.83		3.41	3.40		6	
2/1/19	11:40	Cloudy	Middle	3.0	18.40	18.40	18.35	6.74	6.74	6.74	33.73	33.73	33.73	77.3	77.4	77.5	5.94	5.96	5.96	4.08	4.00	4.02	5	5.00
	11:42		Middle	3.0	18.30	18.30		6.74	6.74		33.73	33.73		77.6	77.6		5.97	5.97		4.00	4.00		5	
4/1/19	17:00	Fine	Middle	3.0	19.30	19.30	19.30	7.90	7.90	7.91	33.76	33.76	33.76	92.6	92.5	92.5	6.99	6.98	6.98	4.08	4.01	4.02	3	3.00
	17:02		Middle	3.0	19.30	19.30		7.91	7.91		33.76	33.76		92.4	92.5		6.98	6.98		4.00	4.00		3	
7/1/19	7:55	Cloudy	Middle	3.0	18.80	18.80	18.80	8.05	8.05	8.05	33.46	33.46	33.46	85.1	85.0	84.6	6.49	6.49	6.47	4.28	4.28	4.28	6	6.00
	7:57		Middle	3.0	18.80	18.80		8.05	8.05		33.46	33.46		85.2	83.0		6.51	6.40		4.29	4.27		6	
9/1/19	10:50	Cloudy	Middle	3.0	18.40	18.40	18.40	8.21	8.21	8.21	33.28	33.28	33.28	91.3	91.4	91.3	7.04	7.04	7.03	6.05	6.06	6.05	3	2.50
	10:52		Middle	3.0	18.40	18.40		8.21	8.21		33.28	33.28		91.3	91.1		7.03	7.02		6.05	6.03		2	
11/1/19	10:20	Cloudy	Middle	3.0	19.70	19.70	19.70	8.10	8.10	8.11	32.66	32.66	32.66	101.8	101.6	101.1	7.67	7.66	7.62	7.51	7.42	7.46	6	5.50
	10:22		Middle	3.0	19.70	19.70		8.11	8.11		32.66	32.66		100.4	100.6		7.57	7.57		7.44	7.46		5	
14/1/19	13:10	Cloudy	Middle	3.0	19.10	19.10	19.10	8.67	8.67	8.68	32.25	32.25	32.25	91.8	92.1	92.2	7.02	7.04	7.05	2.82	2.83	2.84	4	4.00
	13:12		Middle	3.0	19.10	19.10		8.68	8.68		32.25	32.25		92.5	92.5		7.07	7.08		2.85	2.85		4	
16/1/19	13:05	Cloudy	Middle	3.0	19.80	19.80	19.80	8.63	8.63	8.64	32.03	32.03	32.03	102.4	102.0	101.6	7.74	7.71	7.68	0.98	0.97	0.97	7	6.50
	13:07		Middle	3.0	19.80	19.80		8.64	8.64		32.03	32.03		101.0	100.9		7.64	7.63		0.96	0.96		6	
18/1/19	13:30	Cloudy	Middle	3.0	18.70	18.70	18.70	8.66	8.66	8.67	31.86	31.86	31.87	88.8	88.9	88.7	6.85	6.87	6.85	2.45	2.45	2.48	4	5.00
	13:32		Middle	3.0	18.70	18.70		8.67	8.67		31.87	31.87		88.4	88.8		6.83	6.83		2.51	2.52		6	
21/1/19	7:34	Cloudy	Middle	2.5	18.00	18.00	18.00	7.80	7.80	7.80	31.05	31.05	31.05	78.8	79.3	78.9	6.20	6.23	6.20	2.92	2.87	2.86	5	5.50
	7:35		Middle	2.5	18.00	18.00		7.80	7.80		31.05	31.05		79.1	78.4		6.22	6.16		2.84	2.80		6	
23/1/19	9:35	Fine	Middle	3.0	17.80	17.80	17.75	8.34	8.34	8.34	31.27	31.27	31.27	96.2	96.3	96.2	7.59	7.60	7.59	2.10	2.10	2.12	5	5.50
	9:37		Middle	3.0	17.70	17.70		8.34	8.34		31.27	31.27		96.0	96.1		7.57	7.58		2.12	2.16		6	
25/1/19	14:40	Fine	Middle	3.0	20.40	20.40	20.40	8.16	8.16	8.17	31.17	31.17	31.17	107.0	102.1	103.1	7.66	7.66	7.64	3.01	3.04	3.03	9	9.50
	14:42		Middle	3.0	20.40	20.40		8.17	8.17		31.17	31.17		101.7	101.5		7.61	7.61		3.04	3.04		10	

Remarks:
Single underline denotes exceedance over Action Level.
Double underline denotes exceedance over Limit Level.



**Water Monitoring Result at P1 - HKCEC Phase I
Mid-Flood Tide**

Date	Time	Weather Condition	Sampling Depth		Water Temperature			pH			Salinity			DO Saturation		DO		Turbidity		Suspended Solids				
					°C			-			ppt			%		mg/L		NTU		mg/L				
			m	Value	Average	Value	Average	Value	Average	Value	Average	Value	Average	Value	Average	Value	Average	Value	Average	Value	Average	Value	Average	
27/12/18	10:45	Cloudy	Middle	3.0	21.00	21.00	21.05	7.27	7.27	7.28	33.26	33.26	33.26	71.2	71.6	70.9	5.23	5.25	5.19	4.97	4.97	4.97	7	6.50
	10:47		Middle	3.0	21.10	21.10		7.28	7.28		33.26	33.26		70.2	70.4		5.13	5.14		4.97	4.98		6	
29/12/18	9:30	Fine	Middle	2.5	19.00	19.00	19.00	6.89	6.89	6.89	32.56	32.56	32.56	75.5	74.9	74.3	5.79	5.78	5.71	5.63	5.61	5.61	6	6.00
	9:32		Middle	2.5	19.00	19.00		6.89	6.89		32.56	32.56		73.1	73.5		5.63	5.65		5.60	5.60		6	
31/12/18	14:30	Fine	Middle	3.0	18.90	18.90	18.85	6.82	6.82	6.83	33.76	33.76	33.76	76.6	76.9	76.9	5.83	5.86	5.86	3.95	3.94	3.94	3	3.00
	14:32		Middle	3.0	18.80	18.80		6.84	6.84		33.75	33.75		77.1	77.1		5.87	5.87		3.94	3.94		3	
2/1/19	11:15	Cloudy	Middle	3.0	18.20	18.20	18.20	6.53	6.53	6.57	33.34	33.34	33.34	76.9	77.6	77.8	5.94	6.00	6.01	4.31	4.29	4.27	4	4.00
	11:17		Middle	3.0	18.20	18.20		6.61	6.61		33.34	33.34		78.3	78.3		6.05	6.05		4.23	4.23		4	
4/1/19	16:40	Fine	Middle	3.0	20.00	20.00	20.05	7.69	7.69	7.70	33.81	33.81	33.81	92.2	93.0	92.9	6.86	6.91	6.91	3.76	3.70	3.70	3	3.00
	16:42		Middle	3.0	20.10	20.10		7.71	7.71		33.80	33.80		93.1	93.2		6.92	6.93		3.67	3.66		3	
7/1/19	7:30	Cloudy	Middle	3.0	18.90	18.90	18.90	7.95	7.95	7.96	33.53	33.53	33.53	86.3	86.4	86.3	6.57	6.58	6.57	4.74	4.77	4.76	5	5.50
	7:32		Middle	3.0	18.90	18.90		7.96	7.96		33.53	33.53		86.3	86.1		6.57	6.56		4.77	4.75		6	
9/1/19	10:30	Cloudy	Middle	3.0	18.80	1.80	14.60	8.06	8.06	8.07	33.35	33.35	33.35	95.7	95.6	95.0	7.30	7.30	7.25	5.38	5.39	5.37	2	2.00
	10:32		Middle	3.0	18.90	18.90		8.07	8.07		33.35	33.35		94.2	94.3		7.19	7.19		5.37	5.34		2	
11/1/19	10:00	Cloudy	Middle	3.0	19.90	19.90	19.90	7.62	7.62	7.66	32.69	32.69	32.69	102.2	102.2	101.5	7.67	7.67	7.62	4.23	4.23	4.23	3	3.00
	10:02		Middle	3.0	19.90	19.90		7.69	7.69		32.68	32.68		100.8	100.9		7.56	7.57		4.23	4.23		3	
14/1/19	12:50	Cloudy	Middle	3.0	19.20	19.20	19.25	8.62	8.62	8.63	32.29	32.29	32.29	100.2	100.1	99.4	7.64	7.62	7.57	1.86	1.92	1.91	3	3.00
	12:52		Middle	3.0	19.30	19.30		8.64	8.64		32.29	32.29		98.9	98.5		7.52	7.50		1.93	1.94		3	
16/1/19	12:45	Cloudy	Middle	4.0	19.80	19.80	19.85	8.37	8.37	8.48	31.94	31.94	31.95	95.5	95.6	95.3	7.21	7.21	7.20	1.04	1.06	1.06	4	3.50
	12:47		Middle	4.0	19.90	19.90		8.59	8.59		31.95	31.95		95.0	95.1		7.18	7.18		1.07	1.07		3	
18/1/19	13:10	Cloudy	Middle	3.0	18.50	18.50	18.50	8.21	8.21	8.25	31.62	31.62	31.62	100.9	101.0	100.5	7.83	7.84	7.79	2.03	2.03	2.03	6	5.00
	13:12		Middle	3.0	18.50	18.50		8.29	8.29		31.61	31.61		100.0	100.0		7.75	7.75		2.02	2.02		4	
21/1/19	7:05	Cloudy	Middle	2.5	18.00	18.00	18.00	7.77	7.77	7.77	30.15	30.15	30.15	70.2	70.4	70.3	5.55	5.56	5.55	4.88	5.07	5.01	5	5.00
	7:06		Middle	2.5	18.00	18.00		7.77	7.77		30.15	30.15		70.4	70.0		5.57	5.53		5.02	5.05		5	
23/1/19	9:15	Fine	Middle	3.0	17.60	17.60	17.60	8.23	8.23	8.24	31.22	31.22	31.22	95.5	95.3	95.2	7.56	7.56	7.55	2.32	2.32	2.32	4	4.00
	9:17		Middle	3.0	17.60	17.60		8.24	8.24		31.22	31.22		94.9	95.2		7.52	7.54		2.32	2.32		4	
25/1/19	14:20	Fine	Middle	3.0	20.10	20.10	20.20	7.88	7.88	7.92	31.17	31.17	31.17	99.9	99.5	99.6	7.52	7.49	7.49	2.74	2.59	2.60	8	9.00
	14:22		Middle	3.0	20.30	20.30		7.95	7.95		31.17	31.17		99.4	99.5		7.48	7.48		2.53	2.53		10	

Remarks:
Single underline denotes exceedance over Action Level.
Double underline denotes exceedance over Limit Level.



**Water Monitoring Result at P3 - APA
Mid-Flood Tide**

Date	Time	Weather Condition	Sampling Depth		Water Temperature			pH			Salinity			DO Saturation			DO		Turbidity			Suspended Solids		
					°C		-		ppt		%		mg/L		NTU		mg/L							
			m	Value	Average	Value	Average	Value	Average	Value	Average	Value	Average	Value	Average	Value	Average	Value	Average	Value	Average			
27/12/18	10:50	Cloudy	Middle	3.0	20.80	20.80	20.80	7.28	7.28	7.29	33.37	33.37	33.38	71.6	71.7	71.9	5.27	5.27	5.29	4.82	4.81	4.81	4	4.00
	10:52		Middle	3.0	20.80	20.80		7.29	7.29		33.38	33.38		72.2	72.2		5.31	5.32		4.80	4.80		4	
29/12/18	9:35	Fine	Middle	2.5	19.20	19.20	19.10	6.95	6.95	6.97	33.63	33.63	33.64	73.6	74.8	74.7	5.61	5.68	5.68	5.28	5.28	5.31	3	3.00
	9:37		Middle	2.5	19.00	19.00		6.99	6.99		33.64	33.64		75.2	75.2		5.72	5.72		5.34	5.34		3	
31/12/18	14:35	Fine	Middle	3.0	18.50	18.50	18.50	6.82	6.82	6.82	33.80	33.80	33.80	75.1	75.7	76.0	5.76	5.80	5.83	3.51	3.52	3.51	3	3.00
	14:37		Middle	3.0	18.50	18.50		6.82	6.82		33.80	33.80		76.4	76.7		5.86	5.88		3.51	3.51		3	
2/1/19	11:20	Cloudy	Middle	3.0	18.00	18.00	18.00	6.66	6.66	6.67	33.80	33.80	33.80	75.6	76.1	76.3	5.84	5.88	5.89	4.66	4.62	4.62	6	6.00
	11:22		Middle	3.0	18.00	18.00		6.68	6.68		33.80	33.80		76.6	76.7		5.92	5.93		4.60	4.58		6	
4/1/19	16:45	Fine	Middle	3.0	19.50	19.50	19.55	7.75	7.75	7.76	33.82	33.82	33.82	92.9	92.3	92.0	6.98	6.93	6.91	3.66	3.65	3.65	3	3.00
	16:47		Middle	3.0	19.60	19.60		7.76	7.76		33.81	33.81		91.2	91.5		6.85	6.87		3.65	3.65		3	
7/1/19	7:35	Cloudy	Middle	3.0	18.70	18.70	18.75	7.98	7.98	7.98	33.51	33.51	33.51	87.0	87.2	86.7	6.65	6.66	6.63	4.60	4.63	4.63	4	4.50
	7:37		Middle	3.0	18.80	18.80		7.98	7.98		33.51	33.51		86.2	86.4		6.59	6.60		4.64	4.65		5	
9/1/19	10:35	Cloudy	Middle	3.0	18.60	18.60	18.60	8.10	8.10	8.11	33.32	33.32	33.32	89.6	89.7	89.3	6.87	6.87	6.85	5.41	5.40	5.40	3	3.00
	10:37		Middle	3.0	18.60	18.60		8.11	8.11		33.32	33.32		89.0	89.0		6.82	6.82		5.39	5.38		3	
11/1/19	10:05	Cloudy	Middle	3.0	19.60	19.60	19.65	7.82	7.82	7.84	32.66	32.66	32.67	100.6	101.1	100.7	7.59	7.63	7.60	6.78	6.76	6.72	3	3.50
	10:07		Middle	3.0	19.70	19.70		7.85	7.85		32.67	32.67		100.5	100.7		7.58	7.60		6.66	6.67		4	
14/1/19	12:55	Cloudy	Middle	3.0	19.10	19.10	19.10	8.64	8.64	8.65	32.27	32.27	32.27	93.7	93.9	93.3	7.16	7.17	7.13	2.80	2.71	2.73	3	3.50
	12:57		Middle	3.0	19.10	19.10		8.65	8.65		32.27	32.27		92.8	92.9		7.08	7.10		2.70	2.71		4	
16/1/19	12:50	Cloudy	Middle	3.0	19.50	19.50	19.50	8.51	8.51	8.52	31.93	31.93	31.93	93.1	93.0	93.2	7.07	7.07	7.07	1.50	1.50	1.51	3	3.50
	12:52		Middle	3.0	19.50	19.50		8.52	8.52		31.93	31.93		93.1	93.4		7.09	7.05		1.51	1.52		4	
18/1/19	13:15	Cloudy	Middle	3.0	18.30	18.30	18.30	8.46	8.46	8.46	31.92	31.92	31.92	107.2	106.7	111.4	8.34	8.31	8.68	1.79	1.78	1.77	6	5.00
	13:17		Middle	3.0	18.30	18.30		8.46	8.46		31.92	31.92		115.7	115.8		9.03	9.04		1.77	1.74		4	
21/1/19	7:11	Cloudy	Middle	2.5	18.00	18.00	18.00	7.77	7.77	7.77	30.66	30.66	30.66	74.0	74.5	73.9	5.83	5.87	5.82	4.83	4.71	4.69	4	3.50
	7:12		Middle	2.5	18.00	18.00		7.77	7.77		30.66	30.66		73.5	73.6		5.79	5.80		4.73	4.49		3	
23/1/19	9:20	Fine	Middle	3.0	17.40	17.40	17.40	8.28	8.28	8.28	31.24	31.24	31.24	93.7	94.0	93.7	7.44	7.47	7.44	2.16	2.16	2.16	5	5.00
	9:22		Middle	3.0	17.40	17.40		8.28	8.28		31.24	31.24		93.9	93.1		7.46	7.40		2.16	2.16		5	
25/1/19	14:25	Fine	Middle	3.0	19.30	19.30	19.35	8.08	8.08	8.09	31.13	31.13	31.13	96.0	97.4	97.4	7.39	7.46	7.47	2.38	2.33	2.34	10	10.50
	14:27		Middle	3.0	19.40	19.40		8.10	8.10		31.13	31.13		97.8	98.4		7.48	7.53		2.34	2.32		11	

Remarks:
Single underline denotes exceedance over Action Level.
Double underline denotes exceedance over Limit Level.



**Water Monitoring Result at P4 - SOC
Mid-Flood Tide**

Date	Time	Weather Condition	Sampling Depth		Water Temperature			pH			Salinity			DO Saturation			DO			Turbidity			Suspended Solids	
					°C		-		ppt		%		mg/L		NTU		mg/L							
			m	Value	Average	Value	Average	Value	Average	Value	Average	Value	Average	Value	Average	Value	Average	Value	Average	Value	Average	Value	Average	
27/12/18	10:55	Cloudy	Middle	3.0	20.90	20.90	20.90	7.30	7.30	7.30	33.39	33.39	33.39	69.5	69.7	70.0	5.11	5.12	5.15	4.83	4.82	4.82	8	8.50
	10:57		Middle	3.0	20.90	20.90		7.30	7.30		33.39	33.39		70.3	70.4		5.17	5.18		4.81	4.81		9	
29/12/18	9:40	Fine	Middle	2.5	19.50	19.50	19.40	7.04	7.04	7.04	33.58	33.58	33.58	72.5	72.7	72.6	5.48	5.49	5.49	4.58	4.57	4.57	3	3.00
	9:42		Middle	2.5	19.30	19.30		7.04	7.04		33.58	33.58		72.7	72.3		5.50	5.47		4.56	4.55		3	
31/12/18	14:40	Fine	Middle	3.0	19.00	19.00	19.00	6.85	6.85	6.86	33.77	33.77	33.77	77.8	77.7	77.6	5.91	5.90	5.89	3.41	3.42	3.43	6	6.00
	14:42		Middle	3.0	19.00	19.00		6.86	6.86		33.77	33.77		77.4	77.4		5.88	5.88		3.44	3.46		6	
2/1/19	11:25	Cloudy	Middle	3.0	18.50	18.50	18.45	6.71	6.71	6.75	33.79	33.79	33.79	76.2	76.5	76.5	5.84	5.87	5.87	4.01	4.01	4.01	4	4.00
	11:27		Middle	3.0	18.40	18.40		6.78	6.78		33.79	33.79		76.7	76.5		5.89	5.89		4.00	4.00		4	
4/1/19	16:50	Fine	Middle	3.0	19.30	19.30	19.35	7.80	7.80	7.82	33.76	33.76	33.76	90.3	90.0	90.7	6.86	6.79	6.85	3.57	3.52	3.51	3	3.00
	16:52		Middle	3.0	19.40	19.40		7.84	7.84		33.76	33.76		91.2	91.1		6.87	6.87		3.48	3.47		3	
7/1/19	7:40	Cloudy	Middle	3.0	18.80	18.80	18.80	8.00	8.00	8.01	33.48	33.48	33.48	86.6	86.7	86.7	6.61	6.61	6.61	4.50	4.46	4.45	5	5.00
	7:42		Middle	3.0	18.80	18.80		8.02	8.02		33.48	33.48		86.6	86.7		6.60	6.61		4.44	4.41		5	
9/1/19	10:40	Cloudy	Middle	3.0	18.50	18.50	18.50	8.14	8.14	8.15	33.31	33.31	33.31	87.5	88.2	88.2	6.72	6.77	6.77	5.43	5.36	5.35	<2	3.00
	10:42		Middle	3.0	18.50	18.50		8.15	8.15		33.31	33.31		88.7	88.5		6.81	6.79		5.32	5.30		3	
11/1/19	10:10	Cloudy	Middle	3.0	19.70	19.70	19.75	7.92	7.92	7.95	32.68	32.68	32.68	96.6	96.7	96.7	7.27	7.27	7.27	6.80	6.81	6.81	6	6.00
	10:12		Middle	3.0	19.80	19.80		7.98	7.98		32.67	32.67		96.6	96.7		7.27	7.27		6.80	6.81		6	
14/1/19	13:00	Cloudy	Middle	3.0	19.10	19.10	19.10	8.65	8.65	8.66	32.18	32.18	32.21	93.2	93.1	92.7	7.12	7.11	7.08	1.96	1.96	1.95	3	3.00
	13:02		Middle	3.0	19.10	19.10		8.66	8.66		32.24	32.24		92.1	92.2		7.03	7.05		1.90	1.96		3	
16/1/19	12:55	Cloudy	Middle	3.0	19.30	19.30	19.30	8.53	8.53	8.53	31.99	31.99	32.00	94.5	94.5	94.6	7.20	7.21	7.21	1.48	1.47	1.47	6	6.00
	12:57		Middle	3.0	19.30	19.30		8.53	8.53		32.00	32.00		94.6	94.6		7.21	7.21		1.48	1.44		6	
18/1/19	13:20	Cloudy	Middle	3.0	18.40	18.40	18.40	8.58	8.58	8.59	31.90	31.90	31.93	88.5	88.5	88.5	6.86	6.86	6.85	1.71	1.72	1.73	4	4.50
	13:22		Middle	3.0	18.40	18.40		8.60	8.60		31.96	31.96		88.4	88.4		6.84	6.84		1.74	1.74		5	
21/1/19	7:16	Cloudy	Middle	2.5	17.90	17.90	17.90	7.78	7.78	7.78	30.66	30.66	30.66	70.2	72.5	71.7	5.55	5.73	5.67	3.30	3.41	3.29	6	6.00
	7:17		Middle	2.5	17.90	17.90		7.78	7.78		30.66	30.66		72.4	71.8		5.72	5.67		3.28	3.15		6	
23/1/19	9:25	Fine	Middle	3.0	17.60	17.60	17.55	8.30	8.33	8.31	31.26	31.26	31.27	96.3	95.7	96.1	7.63	7.59	7.57	2.10	2.10	2.10	5	5.00
	9:27		Middle	3.0	17.50	17.50		8.31	8.31		31.27	31.27		95.8	96.4		7.59	7.46		2.09	2.09		5	
25/1/19	14:30	Fine	Middle	3.0	19.50	19.50	19.55	8.10	8.10	8.11	31.18	31.18	31.18	99.7	99.8	99.8	7.48	7.48	7.48	2.70	2.71	2.68	9	9.50
	14:32		Middle	3.0	19.60	19.60		8.11	8.11		31.18	31.18		99.6	99.9		7.47	7.48		2.66	2.66		10	

Remarks:
Single underline denotes exceedance over Action Level.
Double underline denotes exceedance over Limit Level.



**Water Monitoring Result at P5 - WCT / RT / IT
Mid-Flood Tide**

Date	Time	Weather Condition	Sampling Depth		Water Temperature			pH			Salinity		DO Saturation		DO		Turbidity		Suspended Solids					
					°C			-			ppt		%		mg/L		NTU		mg/L					
			m	Value	Average	Value	Average	Value	Average	Value	Average	Value	Average	Value	Average	Value	Average	Value	Average	Value	Average			
27/12/18	11:00	Cloudy	Middle	3.0	20.80	20.80	20.80	7.31	7.31	7.31	33.41	33.41	33.41	68.9	68.9	69.1	5.07	5.07	5.09	4.78	4.78	4.78	9	9.00
	11:02		Middle	3.0	20.80	20.80		7.31	7.31		33.41	33.41		69.3	69.4		5.09	5.11		4.78	4.79		9	
29/12/18	9:45	Fine	Middle	2.5	19.50	19.50	19.45	7.04	7.04	7.05	33.51	33.51	33.55	71.7	72.4	72.5	5.40	5.47	5.47	4.23	4.25	4.26	4	3.50
	9:47		Middle	2.5	19.40	19.40		7.06	7.06		33.58	33.58		73.2	72.8		5.52	5.49		4.27	4.29		3	
31/12/18	14:45	Fine	Middle	3.0	19.00	19.00	19.05	6.87	6.87	6.87	33.80	33.80	33.80	76.9	76.8	76.5	5.84	5.83	5.84	3.40	3.40	3.40	7	6.50
	14:47		Middle	3.0	19.10	19.10		6.87	6.87		33.80	33.80		76.3	76.0		5.86	5.84		3.40	3.41		6	
2/1/19	11:30	Cloudy	Middle	3.0	18.50	18.50	18.45	6.74	6.74	6.74	33.80	33.80	33.81	76.3	76.5	76.8	5.86	5.87	5.90	4.09	4.10	4.09	5	5.50
	11:32		Middle	3.0	18.40	18.40		6.74	6.74		33.81	33.81		77.0	77.2		5.93	5.93		4.09	4.08		6	
4/1/19	16:55	Fine	Middle	3.0	19.20	19.20	19.20	7.86	7.86	7.87	33.78	33.78	33.78	90.5	90.5	90.3	6.84	6.84	6.82	4.11	4.03	4.06	4	3.50
	16:57		Middle	3.0	19.20	19.20		7.87	7.87		33.78	33.78		90.0	90.1		6.80	6.81		4.05	4.05		3	
7/1/19	7:50	Cloudy	Middle	3.0	18.80	18.80	18.80	8.03	8.03	8.04	33.47	33.47	33.47	95.2	95.3	95.1	7.26	7.27	7.25	4.11	4.10	4.10	4	4.50
	7:52		Middle	3.0	18.80	18.80		8.04	8.04		33.47	33.47		94.9	95.0		7.24	7.24		4.09	4.10		5	
9/1/19	10:45	Cloudy	Middle	3.0	18.50	18.50	18.50	8.18	8.18	8.19	33.31	33.31	33.31	89.1	89.4	89.7	6.85	6.87	6.90	5.26	5.23	5.23	3	3.50
	10:47		Middle	3.0	18.50	18.50		8.19	8.19		33.30	33.30		90.1	90.3		6.93	6.94		5.20	5.21		4	
11/1/19	10:15	Cloudy	Middle	3.0	19.60	19.60	19.60	8.03	8.03	8.04	32.67	32.67	32.67	103.1	103.2	102.7	7.78	7.79	7.75	7.09	7.07	7.10	7	6.50
	10:17		Middle	3.0	19.60	19.60		8.05	8.05		32.67	32.67		102.0	102.5		7.70	7.74		7.11	7.12		6	
14/1/19	13:05	Cloudy	Middle	3.0	19.10	19.10	19.10	8.66	8.66	8.66	32.21	32.21	32.23	90.3	90.0	90.7	6.90	6.88	6.93	2.36	2.47	2.43	3	3.50
	13:07		Middle	3.0	19.10	19.10		8.66	8.66		32.25	32.25		91.5	90.9		6.99	6.94		2.41	2.46		4	
16/1/19	13:00	Cloudy	Middle	3.0	19.20	19.20	19.20	8.54	8.54	8.54	31.95	31.95	31.96	95.1	95.6	95.5	7.30	7.31	7.31	1.43	1.43	1.43	6	5.50
	13:02		Middle	3.0	19.20	19.20		8.54	8.54		31.96	31.96		95.7	95.7		7.31	7.31		1.41	1.43		5	
18/1/19	13:25	Cloudy	Middle	3.0	18.70	18.70	18.70	8.63	8.63	8.64	31.92	31.92	31.92	93.3	92.0	91.9	7.20	7.10	7.09	2.37	2.38	2.37	4	4.00
	13:27		Middle	3.0	18.70	18.70		8.65	8.65		31.92	31.92		91.1	91.1		7.03	7.03		2.36	2.36		4	
21/1/19	7:23	Cloudy	Middle	2.5	18.00	18.00	18.00	7.79	7.79	7.79	31.07	31.07	31.07	74.7	74.5	74.1	5.87	5.85	5.82	3.21	3.28	3.17	6	6.50
	7:24		Middle	2.5	18.00	18.00		7.79	7.79		31.07	31.07		74.1	73.0		5.82	5.73		3.05	3.12		7	
23/1/19	9:30	Fine	Middle	3.0	17.70	17.70	17.70	8.33	8.33	8.33	31.26	31.26	31.26	95.0	95.3	95.2	7.49	7.54	7.51	2.10	2.10	2.13	6	6.00
	9:32		Middle	3.0	17.70	17.70		8.33	8.33		31.26	31.26		95.2	95.1		7.51	7.51		2.16	2.16		6	
25/1/19	14:35	Fine	Middle	3.0	20.00	20.00	20.05	8.13	8.13	8.13	31.18	31.18	31.18	100.2	100.1	100.2	7.57	7.56	7.57	2.46	2.48	2.47	16	15.50
	14:37		Middle	3.0	20.10	20.10		8.13	8.13		31.18	31.18		100.1	100.2		7.56	7.57		2.50	2.44		15	

Remarks:
Single underline denotes exceedance over Action Level.
Double underline denotes exceedance over Limit Level.



**Water Monitoring Result at RW21-P789 - GEC / CRB / SHK
Mid-Flood Tide**

Date	Time	Weather Condition	Sampling Depth		Water Temperature			pH			Salinity			DO Saturation			DO		Turbidity			Suspended Solids		
					°C			-			ppt			%			mg/L		NTU			mg/L		
			m	Value	Average	Value	Average	Value	Average	Value	Average	Value	Average	Value	Average	Value	Average	Value	Average	Value	Average	Value	Average	
27/12/18	11:15	Cloudy	Middle	4.0	21.20	21.20	21.20	7.29	7.29	7.30	33.41	33.41	33.41	74.8	75.1	74.7	5.46	5.49	5.46	6.46	6.47	6.47	8	8.00
	11:17		Middle	4.0	21.20	21.20		7.30	7.30		33.41	33.41		74.6	74.4		5.44	5.43		6.48	6.48		8	
29/12/18	10:05	Fine	Middle	4.0	19.70	19.70	19.60	7.12	7.12	7.15	33.43	33.43	33.43	78.4	78.6	78.2	5.90	5.91	5.89	5.10	5.08	5.13	4	3.50
	10:07		Middle	4.0	19.50	19.50		7.17	7.17		33.43	33.43		78.0	77.7		5.88	5.86		5.16	5.16		3	
31/12/18	15:15	Fine	Middle	4.0	19.30	19.30	19.20	6.82	6.82	6.85	33.35	33.35	32.85	80.3	79.2	79.2	6.13	6.04	6.04	2.64	2.63	2.64	4	3.50
	15:17		Middle	4.0	19.10	19.10		6.87	6.87		32.35	32.35		78.7	78.7		6.00	6.00		2.66	2.64		3	
2/1/19	11:55	Cloudy	Middle	4.0	18.40	18.40	18.40	6.80	6.80	6.81	33.22	33.22	33.22	74.5	74.9	74.8	5.74	5.77	5.76	4.42	4.38	4.40	9	9.50
	11:57		Middle	4.0	18.40	18.40		6.81	6.81		33.22	33.22		75.1	74.7		5.78	5.76		4.38	4.43		10	
4/1/19	14:50	Fine	Middle	4.0	20.00	20.00	20.00	7.73	7.73	7.75	32.98	32.98	32.98	93.2	93.0	92.6	6.98	6.94	6.91	4.96	4.86	4.90	4	4.00
	14:52		Middle	4.0	20.00	20.00		7.76	7.76		32.98	32.98		92.2	92.0		6.87	6.86		4.88	4.89		4	
7/1/19	8:15	Cloudy	Middle	4.0	19.20	19.20	19.20	7.89	7.89	7.91	33.60	33.60	33.60	91.2	90.8	90.5	6.90	6.87	6.85	4.77	4.79	4.80	6	6.00
	8:17		Middle	4.0	19.20	19.20		7.92	7.92		33.60	33.60		90.1	90.0		6.81	6.81		4.80	4.83		6	
9/1/19	11:15	Cloudy	Middle	4.0	18.80	18.80	18.75	8.24	8.24	8.24	33.20	33.20	33.20	86.6	86.8	86.4	6.62	6.66	6.62	4.89	4.90	4.90	2	2.00
	11:17		Middle	4.0	18.70	18.70		8.24	8.24		33.20	33.20		86.0	86.2		6.58	6.60		4.91	4.91		2	
11/1/19	11:00	Cloudy	Middle	4.0	19.90	19.90	19.95	7.30	7.32	7.31	32.53	32.53	32.53	103.2	103.4	102.3	7.72	7.74	7.65	4.70	4.72	4.73	5	5.00
	11:02		Middle	4.0	20.00	20.00		7.30	7.32		32.52	32.52		101.5	101.1		7.58	7.55		4.74	4.75		5	
14/1/19	10:40	Cloudy	Middle	4.0	19.40	19.40	19.45	8.51	8.51	8.52	32.09	32.09	32.09	93.6	93.2	93.1	7.11	7.07	7.07	7.21	7.24	7.25	5	5.00
	10:42		Middle	4.0	19.50	19.50		8.53	8.53		32.09	32.09		92.8	92.7		7.04	7.04		7.27	7.27		5	
16/1/19	13:30	Cloudy	Middle	4.0	19.30	19.30	19.30	8.66	8.66	8.66	31.95	31.95	31.96	96.0	96.0	96.1	7.32	7.32	7.33	2.94	2.93	2.93	7	6.50
	13:32		Middle	4.0	19.30	19.30		8.66	8.66		31.96	31.96		96.1	96.2		7.33	7.34		2.93	2.92		6	
18/1/19	14:00	Cloudy	Middle	4.0	18.40	18.40	18.40	8.68	8.68	8.69	31.86	31.86	31.86	87.1	87.4	86.5	6.77	6.78	6.73	4.34	4.46	4.49	10	10.00
	14:02		Middle	4.0	18.40	18.40		8.69	8.69		31.86	31.86		85.7	85.8		6.68	6.69		4.59	4.58		10	
21/1/19	3:30	Cloudy	Middle	3.5	17.90	17.90	17.90	7.77	7.77	7.77	30.87	30.87	30.87	78.9	78.4	78.2	6.22	6.18	6.17	3.50	3.44	3.45	4	4.50
	3:31		Middle	3.5	17.90	17.90		7.77	7.77		30.87	30.87		78.3	77.3		6.17	6.10		3.43	3.41		5	
23/1/19	9:50	Fine	Middle	4.0	18.10	18.10	18.10	8.29	8.29	8.30	31.25	31.25	31.25	96.5	96.5	96.0	7.57	7.57	7.53	2.35	2.36	2.36	5	5.00
	9:52		Middle	4.0	18.10	18.10		8.31	8.31		31.25	31.25		95.5	95.5		7.49	7.49		2.36	2.36		5	
25/1/19	13:55	Fine	Middle	4.0	19.90	19.90	19.90	8.16	8.16	8.17	31.08	31.08	31.08	98.4	98.2	98.6	7.46	7.44	7.47	3.01	3.01	3.02	14	13.00
	13:57		Middle	4.0	19.90	19.90		8.17	8.17		31.08	31.08		98.7	98.9		7.48	7.50		3.02	3.03		12	

Remarks:
Single underline denotes exceedance over Action Level.
Double underline denotes exceedance over Limit Level.



**Water Monitoring Result at WSD19 - Sheung Wan
Mid-Flood Tide**

Date	Time	Weather Condition	Sampling Depth		Water Temperature			pH			Salinity			DO Saturation			DO			Turbidity			Suspended Solids	
					°C			-			ppt			%			mg/L			NTU			mg/L	
					Value	Average		Value	Average		Value	Average		Value	Average		Value	Average		Value	Average		Value	Average
27/12/18	9:40	Cloudy	Middle	4.0	21.20	21.20	21.20	6.91	6.91	6.93	33.16	33.16	33.16	66.9	67.1	66.4	4.89	4.91	4.85	7.98	7.97	7.96	9	8.50
	9:42		Middle	4.0	21.20	21.20		6.94	6.94		33.16	33.16		65.7	65.7		4.81	4.80		7.93	7.94		8	
29/12/18	10:30	Fine	Middle	4.0	19.70	19.70	19.55	7.16	7.16	7.20	33.68	33.68	33.68	84.2	82.0	81.9	6.34	6.17	6.16	6.21	6.23	6.30	7	7.00
	10:32		Middle	4.0	19.40	19.40		7.23	7.23		33.68	33.68		80.7	80.6		6.07	6.06		6.37	6.37		7	
31/12/18	13:30	Fine	Middle	3.5	19.60	19.60	19.55	6.71	6.71	6.71	33.45	33.45	33.45	73.0	73.1	74.2	5.49	5.49	5.58	6.01	6.03	6.05	6	5.50
	13:32		Middle	3.5	19.50	19.50		6.71	6.71		33.44	33.44		75.2	75.4		5.66	5.68		6.06	6.08		5	
2/1/19	12:15	Cloudy	Middle	4.0	18.70	18.70	18.65	6.82	6.82	6.83	33.62	33.62	33.62	76.7	77.1	77.1	5.88	5.91	5.90	5.33	5.34	5.35	4	4.00
	12:17		Middle	4.0	18.60	18.60		6.83	6.83		33.62	33.62		77.5	77.2		5.90	5.91		5.37	5.37		4	
4/1/19	13:45	Fine	Middle	3.5	19.90	19.90	19.90	7.32	7.32	7.33	33.63	33.63	33.63	92.6	91.4	91.2	6.92	6.85	6.82	7.94	7.93	7.93	8	8.00
	13:47		Middle	3.5	19.90	19.90		7.33	7.33		33.62	33.62		90.7	90.2		6.77	6.73		7.93	7.90		8	
7/1/19	9:20	Cloudy	Middle	4.0	18.90	18.90	18.90	8.03	8.03	8.04	33.52	33.52	33.52	88.1	87.8	87.9	6.71	6.69	6.70	5.24	5.27	5.26	6	6.00
	9:22		Middle	4.0	18.90	18.90		8.04	8.04		33.52	33.52		88.0	87.6		6.71	6.68		5.27	5.26		6	
9/1/19	8:40	Cloudy	Middle	4.0	19.20	19.20	19.20	7.55	7.55	7.62	33.22	33.22	33.22	86.9	87.1	86.8	6.59	6.61	6.58	6.90	6.89	6.88	6	5.50
	8:42		Middle	4.0	19.20	19.20		7.69	7.69		33.21	33.21		86.6	86.4		6.57	6.55		6.87	6.86		5	
11/1/19	12:00	Cloudy	Middle	4.0	20.10	20.10	20.20	8.02	8.02	8.05	32.68	32.68	32.68	100.5	100.6	99.8	7.50	7.51	7.45	6.42	6.44	6.45	8	7.50
	12:02		Middle	4.0	20.30	20.30		8.07	8.07		32.68	32.68		99.0	99.1		7.38	7.39		6.47	6.47		7	
14/1/19	11:40	Cloudy	Middle	3.0	19.40	19.40	19.45	8.57	8.57	8.58	32.35	32.35	32.42	88.0	86.5	86.7	6.68	6.57	6.57	2.50	2.51	2.47	5	4.50
	11:42		Middle	3.0	19.50	19.50		8.59	8.59		32.60	32.36		86.1	86.1		6.52	6.52		2.43	2.42		4	
16/1/19	13:50	Cloudy	Middle	4.0	18.90	18.90	18.90	8.07	8.07	8.07	32.07	32.07	32.07	92.4	92.2	92.3	7.10	7.09	7.10	1.82	1.64	1.74	4	4.00
	13:52		Middle	4.0	18.90	18.90		8.07	8.07		32.07	32.07		92.3	92.4		7.10	7.10		1.73	1.77		4	
18/1/19	15:00	Cloudy	Middle	4.0	18.80	18.80	18.80	8.64	8.64	8.65	31.98	31.98	31.98	97.9	97.7	97.1	7.54	7.52	7.48	2.44	2.41	2.37	6	5.00
	15:02		Middle	4.0	18.80	18.80		8.65	8.65		31.98	31.98		96.3	96.5		7.41	7.43		2.32	2.32		4	
21/1/19	4:02	Cloudy	Middle	3.5	18.00	18.00	18.00	7.74	7.74	7.74	31.84	31.84	31.84	78.0	78.6	79.4	6.10	6.15	6.21	5.97	5.76	5.67	8	7.00
	4:03		Middle	3.5	18.00	18.00		7.74	7.74		31.84	31.84		79.2	81.6		6.19	6.39		5.40	5.53		6	
23/1/19	7:45	Fine	Middle	4.0	17.00	17.00	17.00	8.24	8.24	8.25	31.26	31.26	31.26	91.8	92.0	92.0	7.36	7.36	7.36	3.05	3.00	3.01	6	5.00
	7:47		Middle	4.0	17.00	17.00		8.25	8.25		31.25	31.25		92.0	92.1		7.36	7.37		2.99	2.98		4	
25/1/19	15:00	Fine	Middle	3.5	19.30	19.30	19.35	8.10	8.10	8.10	31.14	31.14	31.14	96.3	97.1	97.1	7.37	7.43	7.43	3.06	3.13	3.11	11	10.50
	15:02		Middle	3.5	19.40	19.40		8.10	8.10		31.14	31.14		97.3	97.7		7.46	7.47		3.13	3.13		10	

Remarks:
Single underline denotes exceedance over Action Level.
Double underline denotes exceedance over Limit Level.



**Water Monitoring Result at C1 - HKCEC
Mid-Ebb Tide**

Date	Time	Weater Condition	Sampling Depth		Water Temperature			pH			Salinity			DO Saturation		DO		Turbidity		Suspended Solids				
					°C		-		ppt		%		mg/L		NTU		mg/L							
					Value	Average	Value	Average	Value	Average	Value	Average	Value	Average	Value	Average	Value	Average	Value	Average				
27/12/18	4:27	Cloudy	Middle	2.5	20.70	20.70	20.70	8.18	8.18	8.18	33.05	33.05	33.05	74.7	75.1	75.6	5.52	5.54	5.58	1.27	1.34	1.26	4	4.50
	4:28		Middle	2.5	20.70	20.70		8.18	8.18		33.05	33.05		76.4	76.3		5.64	5.63		1.26	1.15		5	
29/12/18	4:32	Cloudy	Middle	3.0	18.90	18.90	18.90	8.18	8.18	8.18	33.32	33.32	33.32	76.7	77.3	77.1	5.86	5.91	5.89	1.27	1.31	1.32	6	5.50
	4:34		Middle	3.0	18.90	18.90		8.18	8.18		33.32	33.32		77.4	77.0		5.91	5.89		1.37	1.34		5	
31/12/18	8:15	Cloudy	Middle	3.0	17.90	17.90	17.90	8.21	8.21	8.21	33.30	33.30	33.30	75.0	76.9	76.5	5.85	6.00	5.97	1.44	1.48	1.40	<2	2.00
	8:16		Middle	3.0	17.90	17.90		8.21	8.21		33.30	33.30		77.5	76.4		6.05	5.98		1.31	1.35		2	
2/1/19	1:04	Cloudy	Middle	2.5	17.70	17.70	17.70	8.62	8.62	8.62	33.04	33.04	33.04	86.3	87.5	86.9	6.75	6.83	6.79	5.14	5.16	5.14	4	4.00
	1:05		Middle	2.5	17.70	17.70		8.62	8.62		33.04	33.04		87.1	86.6		6.80	6.77		5.20	5.06		4	
4/1/19	3:01	Cloudy	Middle	2.5	19.20	19.20	19.20	8.59	8.59	8.59	32.91	32.91	32.91	87.1	87.5	87.3	6.61	6.65	6.63	5.08	5.02	5.27	5	5.00
	3:02		Middle	2.5	19.20	19.20		8.59	8.59		32.91	32.91		87.7	86.8		6.66	6.59		5.97	4.99		5	
7/1/19	3:17	Cloudy	Middle	2.5	18.30	18.30	18.30	8.65	8.65	8.65	32.31	32.31	32.31	78.4	79.4	78.8	6.09	6.16	6.12	4.54	4.51	4.60	2	2.50
	3:18		Middle	2.5	18.30	18.30		8.65	8.65		32.31	32.31		79.0	78.3		6.13	6.08		4.65	4.68		3	
9/1/18	3:52	Cloudy	Middle	2.5	18.80	18.80	18.80	8.67	8.67	8.67	32.86	32.86	32.86	93.1	91.9	92.1	7.00	6.90	6.91	5.86	5.79	5.79	4	3.50
	3:53		Middle	2.5	18.80	18.80		8.67	8.67		32.86	32.86		92.5	90.9		6.91	6.83		5.69	5.82		3	
11/1/19	5:38	Cloudy	Middle	2.5	18.60	18.60	18.60	8.68	8.68	8.68	32.48	32.48	32.48	91.7	92.6	92.1	7.06	7.13	7.09	5.80	5.84	5.86	3	3.00
	5:39		Middle	2.5	18.60	18.60		8.68	8.68		32.48	32.48		92.3	91.8		7.11	7.07		5.88	5.92		3	
14/1/19	4:15	Cloudy	Middle	3.0	18.80	18.80	18.80	8.61	8.61	8.61	32.27	32.27	32.27	92.5	93.2	92.6	7.11	7.16	7.12	1.67	1.51	1.55	<2	2.00
	4:16		Middle	3.0	18.80	18.80		8.61	8.61		32.27	32.27		92.9	91.9		7.14	7.06		1.53	1.48		2	
16/1/19	22:13	Cloudy	Middle	3.0	18.00	18.00	18.00	8.66	8.67	8.67	31.93	31.93	31.93	82.8	84.2	84.8	6.48	6.57	6.63	1.45	1.49	1.43	3	3.00
	22:14		Middle	3.0	18.00	18.00		8.67	8.67		31.93	31.93		86.2	85.8		6.74	6.71		1.30	1.48		3	
18/1/19	22:12	Cloudy	Middle	3.0	19.10	19.10	19.10	7.80	7.80	7.80	32.14	32.14	32.14	83.4	84.5	83.8	6.27	6.35	6.29	2.94	2.92	3.00	4	4.00
	22:13		Middle	3.0	19.10	19.10		7.80	7.80		32.14	32.14		83.9	83.2		6.30	6.25		3.04	3.11		4	
21/1/19	1:34	Cloudy	Middle	3.0	18.00	18.00	18.00	7.81	7.81	7.81	31.06	31.06	31.06	76.4	76.9	76.8	6.00	6.05	6.03	2.38	2.32	2.32	4	3.50
	1:35		Middle	3.0	18.00	18.00		7.81	7.81		31.06	31.06		76.2	77.5		5.99	6.09		2.23	2.36		3	
23/1/19	3:45	Cloudy	Middle	2.5	16.50	16.50	16.50	8.38	8.38	8.38	31.77	31.77	31.77	85.2	85.7	86.5	6.87	6.91	6.98	2.82	2.84	2.93	3	3.00
	3:46		Middle	2.5	16.50	16.50		8.38	8.38		31.77	31.77		87.9	87.3		7.09	7.04		3.01	3.03		3	
25/1/19	10:05	Fine	Middle	3.0	19.80	19.80	19.80	8.24	8.24	8.24	31.14	31.14	31.14	102.5	102.1	102.1	7.78	7.77	7.77	4.21	4.22	4.11	6	6.00
	10:07		Middle	3.0	19.80	19.80		8.24	8.24		31.14	31.14		101.7	102.1		7.75	7.76		4.02	4.00		6	

Remarks:
Single underline denotes exceedance over Action Level.
Double underline denotes exceedance over Limit Level.



**Water Monitoring Result at P1 - HKCEC Phase I
Mid-Ebb Tide**

Date	Time	Weater Condition	Sampling Depth		Water Temperature		pH			Salinity			DO Saturation		DO		Turbidity		Suspended Solids					
					°C		-			ppt			%		mg/L		NTU		mg/L					
					Value	Average	Value	Average	Value	Average	Value	Average	Value	Average	Value	Average	Value	Average	Value	Average				
27/12/18	3:55	Cloudy	Middle	2.5	20.70	20.70	20.73	8.19	8.19	8.19	33.06	33.06	33.06	76.8	78.5	77.6	5.67	5.80	5.73	1.61	1.18	1.31	6	6.00
	3:56		Middle	2.5	20.80	20.70		8.19	8.19		33.06	33.06		78.0	77.1		5.76	5.69		1.26	1.20		6	
29/12/18	4:02	Cloudy	Middle	3.0	18.70	18.70	18.70	8.21	8.21	8.21	33.35	33.35	33.35	76.1	77.5	77.3	5.83	5.93	5.92	1.22	1.28	1.21	6	5.50
	4:03		Middle	3.0	18.70	18.70		8.21	8.21		33.35	33.35		78.3	77.4		6.00	5.93		1.17	1.16		5	
31/12/18	5:58	Cloudy	Middle	3.0	17.90	17.90	17.90	8.23	8.23	8.23	33.43	33.43	33.43	75.7	77.5	76.9	5.89	6.05	5.99	1.20	1.28	1.28	2	2.00
	5:59		Middle	3.0	17.90	17.90		8.23	8.23		33.43	33.43		77.4	77.1		6.03	6.00		1.34	1.31		2	
2/1/19	0:31	Cloudy	Middle	2.5	17.30	17.30	17.30	8.65	8.65	8.65	33.03	33.03	33.03	86.6	88.4	87.0	6.85	6.97	6.87	4.42	4.50	4.50	5	5.50
	0:32		Middle	2.5	17.30	17.30		8.65	8.65		33.03	33.03		87.3	85.6		6.89	6.76		4.55	4.52		6	
4/1/19	2:30	Cloudy	Middle	2.5	19.20	19.20	19.20	8.63	8.63	8.63	33.01	33.01	33.01	88.3	88.0	87.4	6.70	6.68	6.64	5.41	5.37	5.35	4	4.00
	2:31		Middle	2.5	19.20	19.20		8.63	8.63		33.01	33.01		86.4	86.9		6.56	6.60		5.40	5.23		4	
7/1/19	2:45	Cloudy	Middle	2.5	18.10	18.10	18.10	8.66	8.66	8.66	32.52	32.52	32.52	82.4	83.8	82.1	6.40	6.51	6.42	4.81	4.93	4.78	4	4.00
	2:46		Middle	2.5	18.10	18.10		8.66	8.66		32.52	32.52		80.6	81.7		6.42	6.35		4.71	4.68		4	
9/1/18	3:25	Cloudy	Middle	2.5	18.80	18.80	18.80	8.67	8.67	8.67	32.73	32.73	32.74	93.0	93.7	93.0	7.00	7.05	7.00	5.19	5.77	5.44	4	4.00
	3:26		Middle	2.5	18.80	18.80		8.67	8.67		32.73	32.77		93.2	92.2		7.01	6.94		5.51	5.30		4	
11/1/19	5:03	Cloudy	Middle	2.5	18.60	18.60	18.60	8.70	8.70	8.70	32.51	32.51	32.51	88.2	87.9	88.4	6.79	6.74	6.80	5.85	5.62	5.63	4	4.00
	5:04		Middle	2.5	18.60	18.60		8.70	8.70		32.51	32.51		89.0	88.4		6.85	6.81		5.54	5.50		4	
14/1/19	3:45	Cloudy	Middle	3.0	18.70	18.70	18.70	8.62	8.62	8.62	32.28	32.28	32.28	91.2	93.4	92.5	7.02	7.19	7.12	2.23	2.02	2.08	<2	2.00
	3:46		Middle	3.0	18.70	18.70		8.62	8.62		32.28	32.28		93.0	92.2		7.15	7.10		1.99	2.07		2	
16/1/19	21:41	Cloudy	Middle	3.0	17.50	17.50	17.50	8.71	8.71	8.71	32.04	32.04	32.04	89.8	89.9	90.2	7.08	7.09	7.10	2.58	2.12	2.26	4	3.50
	21:42		Middle	3.0	17.50	17.50		8.71	8.71		32.04	32.04		89.7	91.5		7.06	7.17		2.09	2.26		3	
18/1/19	21:39	Cloudy	Middle	3.0	19.10	19.10	19.10	7.84	7.84	7.84	32.16	32.16	32.16	88.0	89.2	89.2	6.61	6.72	6.71	2.81	2.55	2.55	5	4.50
	21:04		Middle	3.0	19.10	19.10		7.84	7.84		32.16	32.16		89.1	90.4		6.72	6.79		2.42	2.40		4	
21/1/19	1:06	Cloudy	Middle	3.0	17.90	17.90	17.90	7.78	7.78	7.78	30.17	30.17	30.17	69.9	70.7	70.7	5.50	5.59	5.59	2.78	2.75	2.74	3	3.00
	1:07		Middle	3.0	17.90	17.90		7.78	7.78		30.17	30.17		71.3	71.0		5.64	5.61		2.72	2.70		3	
23/1/19	3:13	Cloudy	Middle	2.5	16.40	16.40	16.40	8.35	8.35	8.35	31.22	31.22	31.22	91.6	91.5	90.7	7.43	7.42	7.36	3.29	3.42	3.27	3	3.00
	3:14		Middle	2.5	16.40	16.40		8.35	8.35		31.22	31.22		91.0	88.6		7.38	7.19		3.21	3.15		3	
25/1/19	9:45	Fine	Middle	3.0	18.80	18.80	18.85	7.53	7.53	7.54	30.74	30.74	30.74	99.4	99.4	98.9	7.69	7.69	7.65	3.01	3.00	2.96	8	8.50
	9:47		Middle	3.0	18.90	18.90		7.55	7.55		30.74	30.74		98.2	98.5		7.59	7.64		2.91	2.92		9	

Remarks:
Single underline denotes exceedance over Action Level.
Double underline denotes exceedance over Limit Level.



**Water Monitoring Result at P3 - APA
Mid-Ebb Tide**

Date	Time	Weather Condition	Sampling Depth		Water Temperature			pH			Salinity			DO Saturation		DO		Turbidity			Suspended Solids			
					°C		-		ppt		%		mg/L		NTU		mg/L							
					Value	Average	Value	Average	Value	Average	Value	Average	Value	Average	Value	Average	Value	Average	Value	Average				
27/12/18	4:07	Cloudy	Middle	2.5	20.70	20.70	20.70	8.20	8.20	8.20	33.07	33.07	33.07	77.2	77.4	77.8	5.70	5.71	5.74	1.11	1.08	1.10	7	7.50
	4:08		Middle	2.5	20.70	20.70		8.20	8.20	8.20	33.07	33.07		33.07	77.5		78.9	77.8		5.72	5.82		5.74	
29/12/18	4:11	Cloudy	Middle	3.0	18.50	18.50	18.50	8.23	8.23	8.23	33.34	33.34	33.34	78.4	78.2	78.4	6.03	6.02	6.03	1.10	1.08	1.07	6	5.00
	4:12		Middle	3.0	18.50	18.50		8.23	8.23	8.23	33.34	33.34		33.34	78.4		78.5	78.4		6.03	6.04		6.03	
31/12/18	6:06	Cloudy	Middle	3.0	17.70	17.70	17.70	8.26	8.26	8.26	33.42	33.42	33.42	77.7	77.3	77.7	6.07	6.04	6.07	1.22	1.17	1.16	<2	3.00
	6:07		Middle	3.0	17.70	17.70		8.26	8.26	8.26	33.42	33.42		33.42	77.1		78.7	77.7		6.02	6.15		6.07	
2/1/19	0:38	Cloudy	Middle	2.5	17.40	17.40	17.40	8.66	8.66	8.66	33.18	33.18	33.18	87.1	87.3	88.4	6.83	6.85	6.93	6.25	6.36	6.21	4	4.50
	0:39		Middle	2.5	17.40	17.40		8.66	8.66	8.66	33.18	33.18		33.18	89.7		89.4	88.4		7.04	7.01		6.93	
4/1/19	2:38	Cloudy	Middle	2.5	19.20	19.20	19.20	8.65	8.65	8.65	33.01	33.01	33.01	86.7	86.5	86.3	6.59	6.57	6.56	4.79	4.85	4.81	5	5.50
	2:39		Middle	2.5	19.20	19.20		8.65	8.65	8.65	33.01	33.01		33.01	85.7		86.3	86.3		6.51	6.56		6.56	
7/1/19	2:53	Cloudy	Middle	2.5	18.10	18.10	18.10	8.68	8.68	8.68	32.57	32.57	32.57	84.8	85.4	84.9	6.59	6.64	6.60	5.82	5.85	5.67	4	3.50
	2:54		Middle	2.5	18.10	18.10		8.68	8.68	8.68	32.57	32.57		32.57	85.0		84.5	84.9		6.61	6.57		6.60	
9/1/18	3:31	Cloudy	Middle	2.5	18.60	18.60	18.62	8.68	8.68	8.68	32.72	32.72	32.72	93.0	93.3	93.0	7.02	7.04	7.01	5.91	5.70	5.70	4	3.50
	3:32		Middle	2.5	18.60	18.68		8.68	8.68	8.68	32.72	32.72		32.72	92.8		92.7	93.0		7.00	6.99		7.01	
11/1/19	5:10	Cloudy	Middle	2.5	18.60	18.60	18.60	8.71	8.71	8.71	32.52	32.52	32.52	90.9	90.5	91.2	7.00	6.98	7.03	6.82	6.81	6.77	6	5.50
	5:11		Middle	2.5	18.60	18.60		8.71	8.71	8.71	32.52	32.52		32.52	91.8		91.6	91.2		7.07	7.06		7.03	
14/1/19	3:54	Cloudy	Middle	3.0	18.70	18.70	18.70	8.64	8.64	8.64	32.29	32.29	32.29	91.1	91.7	91.5	7.01	7.06	7.05	1.07	1.14	1.09	<2	2.00
	3:55		Middle	3.0	18.70	18.70		8.64	8.64	8.64	32.29	32.29		32.29	92.2		91.1	91.5		7.10	7.01		7.05	
16/1/19	21:47	Cloudy	Middle	3.0	17.70	17.70	17.70	8.72	8.72	8.72	32.03	32.03	32.03	90.6	91.7	91.9	7.11	7.20	7.22	2.77	2.71	2.72	6	5.50
	21:48		Middle	3.0	17.70	17.70		8.72	8.72	8.72	32.03	32.03		32.03	92.4		92.8	91.9		7.26	7.30		7.22	
18/1/19	21:47	Cloudy	Middle	3.0	19.00	19.00	19.00	7.86	7.86	7.86	32.17	32.17	32.17	91.6	93.7	92.1	6.89	7.05	6.93	2.72	2.82	2.77	4	4.00
	21:48		Middle	3.0	19.00	19.00		7.86	7.86	7.86	32.17	32.17		32.17	92.3		90.9	92.1		6.95	6.84		6.93	
21/1/19	1:12	Cloudy	Middle	3.0	17.90	17.90	17.90	7.77	7.77	7.77	30.64	30.64	30.64	74.7	75.0	75.0	5.90	5.91	5.92	2.60	2.41	2.34	4	4.00
	1:13		Middle	3.0	17.90	17.90		7.77	7.77	7.77	30.64	30.64		30.64	75.3		75.1	75.0		5.94	5.92		5.92	
23/1/19	3:19	Cloudy	Middle	2.5	16.30	16.30	16.30	8.33	8.33	8.33	31.20	31.20	31.20	89.1	87.6	88.7	7.24	7.12	7.21	3.26	3.34	3.30	3	3.00
	3:02		Middle	2.5	16.30	16.30		8.33	8.33	8.33	31.20	31.20		31.20	90.6		87.6	88.7		7.36	7.12		7.21	
25/1/19	9:50	Fine	Middle	3.0	18.60	18.60	18.55	8.16	8.16	8.16	31.10	31.10	31.10	101.4	101.6	101.2	7.79	7.81	7.74	3.92	3.90	3.89	8	7.50
	9:52		Middle	3.0	18.50	18.50		8.16	8.16	8.16	31.10	31.10		31.10	100.8		100.9	101.2		7.67	7.67		7.74	

Remarks:
Single underline denotes exceedance over Action Level.
Double underline denotes exceedance over Limit Level.



**Water Monitoring Result at P4 - SOC
Mid-Ebb Tide**

Date	Time	Weather Condition	Sampling Depth		Water Temperature		pH			Salinity			DO Saturation		DO		Turbidity		Suspended Solids					
					°C		-			ppt			%		mg/L		NTU		mg/L					
					Value	Average	Value	Average	Value	Average	Value	Average	Value	Average	Value	Average	Value	Average	Value	Average				
27/12/18	4:14	Cloudy	Middle	2.5	20.70	20.70	20.70	8.20	8.20	8.20	33.06	33.06	33.06	75.9	77.9	76.5	5.61	5.75	5.65	1.13	1.19	1.17	7	6.50
	4:15		Middle	2.5	20.70	20.70		8.20	8.20	8.20	33.06	33.06		33.06	75.5		76.5	76.5		5.58	5.65		5.65	
29/12/18	4:18	Cloudy	Middle	3.0	18.70	18.70	18.70	8.25	8.25	8.25	33.34	33.34	33.34	72.7	75.2	74.5	5.58	5.77	5.72	1.02	1.07	1.08	6	7.00
	4:19		Middle	3.0	18.70	18.70		8.25	8.25	8.25	33.34	33.34		33.34	75.1		74.9	74.5		5.77	5.75		5.72	
31/12/18	6:11	Cloudy	Middle	3.0	17.60	17.60	17.60	8.28	8.28	8.28	33.41	33.41	33.41	79.1	79.5	79.4	6.18	6.22	6.21	1.33	1.42	1.44	3	2.50
	6:12		Middle	3.0	17.60	17.60		8.28	8.28	8.28	33.41	33.41		33.41	79.1		80.0	79.4		6.19	6.25		6.21	
2/1/19	0:44	Cloudy	Middle	2.5	17.60	17.60	17.60	8.67	8.67	8.67	33.13	33.13	33.13	86.4	86.7	87.5	6.76	6.79	6.85	5.22	5.40	5.22	6	5.50
	0:45		Middle	2.5	17.60	17.60		8.67	8.67	8.67	33.13	33.13		33.13	88.6		88.2	87.5		6.93	6.90		6.85	
4/1/19	2:46	Cloudy	Middle	2.5	19.20	19.20	19.20	8.66	8.66	8.66	32.99	32.98	32.98	87.2	86.9	87.4	6.62	6.60	6.64	4.65	4.60	4.60	5	5.00
	2:47		Middle	2.5	19.20	19.20		8.66	8.66	8.66	32.98	32.98		32.98	87.5		87.8	87.4		6.65	6.68		6.64	
7/1/19	3:02	Cloudy	Middle	2.5	18.10	18.10	18.10	8.68	8.68	8.68	32.58	32.58	32.58	85.2	85.5	84.9	6.62	6.65	6.60	5.74	5.70	5.74	4	3.50
	3:03		Middle	2.5	18.10	18.10		8.68	8.68	8.68	32.58	32.58		32.58	84.8		84.0	84.9		6.59	6.53		6.60	
9/1/18	3:40	Cloudy	Middle	2.5	18.70	18.70	18.70	8.68	8.68	8.68	32.71	32.71	32.71	85.5	91.4	88.6	6.44	6.89	6.67	6.87	6.72	6.73	4	4.00
	3:41		Middle	2.5	18.70	18.70		8.68	8.68	8.68	32.71	32.71		32.71	89.2		88.3	88.6		6.71	6.65		6.67	
11/1/19	5:18	Cloudy	Middle	2.5	18.60	18.60	18.60	8.71	8.71	8.71	32.51	32.51	32.51	92.3	93.0	92.0	7.11	7.16	7.09	6.01	5.98	5.94	5	5.50
	5:19		Middle	2.5	18.60	18.60		8.71	8.71	8.71	32.51	32.51		32.51	92.0		90.8	92.0		7.09	7.00		7.09	
14/1/19	4:07	Cloudy	Middle	3.0	18.70	18.70	18.70	8.64	8.64	8.64	32.28	32.28	32.28	91.4	92.7	92.6	7.04	7.13	7.13	1.14	1.18	1.15	<2	<2
	4:08		Middle	3.0	18.70	18.70		8.64	8.64	8.64	32.28	32.28		32.28	93.4		92.7	92.6		7.19	7.14		7.13	
16/1/19	21:56	Cloudy	Middle	3.0	17.60	17.60	17.60	8.73	8.73	8.73	32.05	32.05	32.05	89.5	89.8	90.3	7.05	7.08	7.12	2.40	2.38	2.16	6	5.50
	21:57		Middle	3.0	17.60	17.60		8.73	8.73	8.73	32.05	32.05		32.05	90.6		91.2	90.3		7.14	7.19		7.12	
18/1/19	21:53	Cloudy	Middle	3.0	18.90	18.90	18.90	7.87	7.87	7.87	32.17	32.17	32.17	88.9	89.5	90.4	6.70	6.75	6.80	1.86	1.82	1.76	5	5.00
	21:54		Middle	3.0	18.90	18.90		7.87	7.87	7.87	32.17	32.17		32.17	91.5		91.6	90.4		6.85	6.90		6.80	
21/1/19	1:17	Cloudy	Middle	3.0	17.80	17.80	17.80	7.78	7.78	7.78	30.66	30.66	30.66	70.4	71.8	70.8	5.57	5.68	5.60	1.95	1.73	1.79	5	5.50
	1:18		Middle	3.0	17.80	17.80		7.78	7.78	7.78	30.66	30.66		30.66	70.6		70.5	70.8		5.58	5.58		5.60	
23/1/19	3:27	Cloudy	Middle	2.5	16.40	16.40	16.40	8.32	8.32	8.32	31.20	31.20	31.20	93.0	92.1	92.5	7.54	7.46	7.49	3.89	3.92	3.87	3	3.00
	3:28		Middle	1.5	16.40	16.40		8.32	8.32	8.32	31.20	31.20		31.20	92.2		92.6	92.5		7.47	7.50		7.49	
25/1/19	9:55	Fine	Middle	3.0	19.70	19.70	19.75	8.19	8.19	8.20	31.15	31.15	31.15	99.2	100.2	99.7	7.54	7.61	7.58	3.68	3.66	3.66	8	8.00
	9:57		Middle	3.0	19.80	19.80		8.20	8.20	8.20	31.15	31.15		31.15	99.5		99.9	99.7		7.56	7.59		7.58	

Remarks:
Single underline denotes exceedance over Action Level.
Double underline denotes exceedance over Limit Level.



**Water Monitoring Result at P5 - WCT / RT / IT
Mid-Ebb Tide**

Date	Time	Weater Condition	Sampling Depth		Water Temperature		pH			Salinity		DO Saturation		DO		Turbidity		Suspended Solids						
					°C		-		ppt		%		mg/L		NTU		mg/L							
			m	Value	Average	Value	Average	Value	Average	Value	Average	Value	Average	Value	Average	Value	Average	Value	Average					
27/12/18	4:20	Cloudy	Middle	2.5	20.70	20.70	20.70	8.21	8.20	8.21	33.05	33.05	33.05	77.7	77.6	77.2	5.73	5.73	5.70	1.71	1.39	1.52	5	5.00
	4:21		Middle	2.5	20.70	20.70		8.21	8.21		33.05	33.05		76.8	76.5		5.67	5.65		1.67	1.30		5	
29/12/18	4:24	Cloudy	Middle	3.0	18.50	18.50	18.50	8.26	8.26	8.26	33.35	33.35	33.35	76.5	76.3	76.5	5.87	5.85	5.88	1.26	1.15	1.20	6	6.00
	4:25		Middle	3.0	18.50	18.50		8.26	8.26		33.35	33.35		77.1	76.1		5.92	5.86		1.20	1.18		6	
31/12/18	6:16	Cloudy	Middle	3.0	17.80	17.80	17.80	8.29	8.29	8.29	33.31	33.31	33.27	73.3	75.8	75.0	5.72	5.92	5.86	1.40	1.36	1.37	2	2.00
	6:17		Middle	3.0	17.80	17.80		8.29	8.29		33.13	33.31		75.9	75.1		5.93	5.87		1.33	1.38		2	
2/1/19	0:53	Cloudy	Middle	2.5	17.60	17.60	17.60	8.69	8.69	8.69	33.06	33.06	33.06	81.2	82.8	83.8	6.35	6.48	6.56	4.42	4.46	4.50	4	4.50
	0:54		Middle	2.5	17.60	17.60		8.69	8.69		33.06	33.06		85.7	85.5		6.71	6.69		4.53	4.60		5	
4/1/19	2:55	Cloudy	Middle	2.5	19.30	19.30	19.30	8.67	8.67	8.67	33.02	33.02	33.02	87.8	88.6	88.2	6.66	6.72	6.69	5.57	5.53	5.55	5	5.00
	2:56		Middle	2.5	19.30	19.30		8.67	8.67		33.02	33.02		88.4	88.0		6.71	6.67		5.59	5.51		5	
7/1/19	3:10	Cloudy	Middle	2.5	18.20	18.20	18.20	8.68	8.68	28.66	32.49	32.49	32.49	85.5	84.5	83.9	6.65	5.57	6.27	6.13	6.09	6.07	3	3.00
	3:11		Middle	2.5	18.20	18.20		8.60	88.68		32.49	32.49		83.1	82.5		6.46	6.41		6.03	6.01		3	
9/1/18	3:47	Cloudy	Middle	2.5	18.10	18.10	18.10	8.63	8.63	8.63	32.73	32.73	32.73	87.0	85.9	86.7	6.64	6.56	6.62	6.09	6.44	6.37	5	5.00
	3:48		Middle	2.5	18.10	18.10		8.63	8.63		32.73	32.73		86.9	86.8		6.64	6.62		6.42	6.51		5	
11/1/19	5:24	Cloudy	Middle	2.5	18.50	18.50	18.50	8.71	8.71	8.71	32.51	32.51	32.51	91.0	91.1	91.3	7.01	7.02	7.04	7.37	7.40	7.35	3	3.00
	5:25		Middle	2.5	18.50	18.50		8.71	8.71		32.51	32.51		91.7	91.5		7.07	7.05		7.33	7.30		3	
14/1/19	4:11	Cloudy	Middle	3.0	18.80	18.80	18.80	8.65	8.65	8.65	32.22	32.22	32.22	91.1	91.6	91.6	7.01	7.04	7.05	1.05	1.18	1.11	<2	<2
	4:12		Middle	3.0	18.80	18.80		8.65	8.65		32.22	32.22		92.4	91.3		7.11	7.02		1.17	1.04		<2	
16/1/19	22:03	Cloudy	Middle	3.0	17.70	17.70	17.70	8.74	8.74	8.74	32.05	32.05	32.05	90.9	89.6	90.4	7.17	7.07	7.12	2.09	2.27	2.23	5	4.50
	22:04		Middle	3.0	17.70	17.70		8.74	8.74		32.05	32.05		89.7	91.5		7.06	7.19		2.25	2.31		4	
18/1/19	21:59	Cloudy	Middle	3.0	18.90	18.90	18.90	7.88	7.88	7.88	32.17	32.17	32.17	90.2	89.9	90.6	6.79	6.77	6.83	2.46	2.28	2.31	4	4.00
	22:00		Middle	3.0	18.90	18.90		7.88	7.88		32.17	32.17		90.6	91.7		6.84	6.91		2.25	2.23		4	
21/1/19	1:24	Cloudy	Middle	3.0	18.00	18.00	18.00	7.79	7.79	7.79	31.06	31.06	31.06	77.6	76.6	76.2	6.10	6.03	5.99	1.64	1.81	1.81	2	3.00
	1:25		Middle	3.0	18.00	18.00		7.79	7.79		31.06	31.06		75.9	74.7		5.97	5.87		1.91	1.87		4	
23/1/19	3:36	Cloudy	Middle	2.5	16.80	16.80	16.80	8.32	8.32	8.32	31.21	31.21	31.21	88.3	88.0	89.2	7.11	7.08	7.19	3.01	3.21	3.20	3	3.50
	3:37		Middle	2.5	16.80	16.80		8.32	8.32		31.21	31.21		89.8	90.8		7.23	7.32		3.27	3.29		4	
25/1/19	10:00	Fine	Middle	3.0	19.80	19.80	19.80	8.23	8.23	8.23	31.09	31.09	31.12	100.1	100.2	100.0	7.60	7.60	7.59	4.00	4.02	4.04	9	8.50
	10:02		Middle	3.0	19.80	19.80		8.23	8.23		31.15	31.15		100.0	99.8		7.59	7.57		4.04	4.08		8	

Remarks:
Single underline denotes exceedance over Action Level.
Double underline denotes exceedance over Limit Level.



**Water Monitoring Result at RW21-P789 - GEC / CRB / SHK
Mid-Ebb Tide**

Date	Time	Weather Condition	Sampling Depth		Water Temperature			pH			Salinity			DO Saturation		DO		Turbidity		Suspended Solids				
					°C		-		ppt		%		mg/L		NTU		mg/L							
					Value	Average	Value	Average	Value	Average	Value	Average	Value	Average	Value	Average	Value	Average	Value	Average				
27/12/18	4:47	Cloudy	Middle	3.5	20.70	20.70	20.70	8.12	8.12	8.12	32.65	32.65	32.65	70.8	71.3	71.0	5.24	5.28	5.25	1.37	1.39	1.41	<2	<2
	4:48		Middle	3.5	20.70	20.70		8.12	8.12		32.65	32.65		71.0	70.7		5.25	5.24		1.46	1.41		<2	
29/12/18	5:52	Cloudy	Middle	3.5	18.60	18.60	18.60	8.27	8.27	8.27	31.91	31.91	31.91	68.6	69.7	69.5	5.33	5.41	5.40	1.15	1.13	1.12	3	3.00
	5:53		Middle	3.5	18.60	18.60		8.27	8.27		31.91	31.91		69.9	69.6		5.43	5.41		1.10	1.09		3	
31/12/18	5:25	Cloudy	Middle	4.0	16.40	16.40	16.40	8.07	8.07	8.07	32.49	32.49	32.49	74.3	73.9	74.3	5.98	5.95	5.98	1.26	1.31	1.33	<2	<2
	5:26		Middle	4.0	16.40	16.40		8.07	8.07		32.49	32.49		75.0	74.1		6.04	5.96		1.34	1.39		<2	
2/1/19	22:10	Cloudy	Middle	3.5	17.60	17.60	17.60	8.39	8.39	8.39	32.12	32.12	32.12	78.2	79.9	78.5	6.12	6.29	6.16	3.56	3.47	3.49	5	4.50
	22:11		Middle	4.0	17.60	17.60		8.39	8.39		32.12	32.12		78.4	77.3		6.18	6.05		3.50	3.44		4	
4/1/19	23:15	Cloudy	Middle	4.0	19.30	19.30	19.30	8.48	8.48	8.48	32.68	32.68	32.68	87.0	88.2	87.1	6.63	6.71	6.63	4.71	4.69	4.58	3	2.50
	23:16		Middle	4.0	19.30	19.30		8.48	8.48		32.68	32.68		87.0	86.3		6.63	6.56		4.44	4.49		2	
7/1/19	3:43	Cloudy	Middle	3.5	18.30	18.30	18.30	8.53	8.53	8.53	32.04	32.04	32.04	77.8	79.5	79.4	6.05	6.18	6.17	4.43	4.33	4.36	5	4.50
	3:44		Middle	3.5	18.30	18.30		8.53	8.53		32.04	32.04		79.9	80.3		6.20	6.24		4.35	4.32		4	
9/1/18	4:30	Cloudy	Middle	3.5	18.30	18.30	18.30	8.43	8.43	8.43	30.45	30.45	30.45	86.0	85.6	85.7	6.62	6.59	6.60	4.12	4.26	4.19	<2	<2
	4:31		Middle	3.5	18.30	18.30		8.43	8.43		30.45	30.45		86.3	85.0		6.64	6.54		4.22	4.14		<2	
11/1/19	5:50	Cloudy	Middle	3.5	18.60	18.60	18.60	8.65	8.65	8.65	31.71	31.71	31.71	90.8	92.2	91.7	7.03	7.13	7.10	5.52	6.04	5.69	3	3.50
	5:51		Middle	3.5	18.60	18.60		8.65	8.65		31.71	31.71		92.5	91.3		7.16	7.06		5.58	5.63		4	
14/1/19	5:12	Cloudy	Middle	3.5	18.80	18.80	18.80	8.49	8.49	8.49	32.20	32.20	24.71	91.7	92.6	92.1	7.05	7.12	7.08	1.05	1.29	1.15	<2	<2
	5:13		Middle	3.5	18.80	18.80		8.50	8.49		32.23	2.20		92.2	91.7		7.09	7.05		1.08	1.19		<2	
16/1/19	22:35	Cloudy	Middle	3.5	17.90	17.90	17.90	8.61	8.61	8.61	30.12	30.12	30.12	82.7	84.0	83.3	6.54	6.65	6.59	2.65	2.41	2.47	5	5.50
	22:36		Middle	3.5	17.90	17.90		8.61	8.61		30.12	30.11		82.8	83.8		6.55	6.63		2.38	2.44		6	
18/1/19	23:03	Cloudy	Middle	3.5	19.00	19.00	19.00	7.83	7.83	7.83	32.06	32.06	32.06	83.7	86.4	86.4	6.30	6.50	6.50	1.33	1.21	1.24	3	3.50
	23:04		Middle	3.5	19.00	19.00		7.83	7.83		32.06	32.06		87.9	87.4		6.61	6.57		1.18	1.24		4	
21/1/19	2:20	Cloudy	Middle	3.5	17.90	17.90	17.90	7.76	7.76	7.76	30.90	30.90	30.90	76.0	76.6	76.4	5.99	6.03	6.02	2.09	2.02	1.96	3	3.50
	2:21		Middle	3.5	17.90	17.90		7.76	7.76		30.90	30.90		76.7	76.3		6.04	6.01		1.87	1.85		4	
23/1/19	4:10	Cloudy	Middle	3.5	16.60	16.60	16.60	8.07	8.07	8.07	30.33	30.33	30.33	79.0	79.6	79.7	6.42	6.48	6.48	1.91	1.93	1.90	4	4.00
	4:11		Middle	3.5	16.60	16.60		8.07	8.07		30.33	30.33		80.4	79.7		6.54	6.49		1.96	1.80		4	
25/1/19	10:20	Fine	Middle	4.0	18.60	18.60	18.60	7.81	7.81	7.84	30.96	30.96	30.98	92.0	92.0	91.9	7.16	7.16	7.14	4.79	4.80	4.81	10	9.00
	10:22		Middle	4.0	18.60	18.60		7.87	7.87		30.99	30.99		91.8	91.9		7.11	7.14		4.81	4.82		8	

Remarks:
Single underline denotes exceedance over Action Level.
Double underline denotes exceedance over Limit Level.



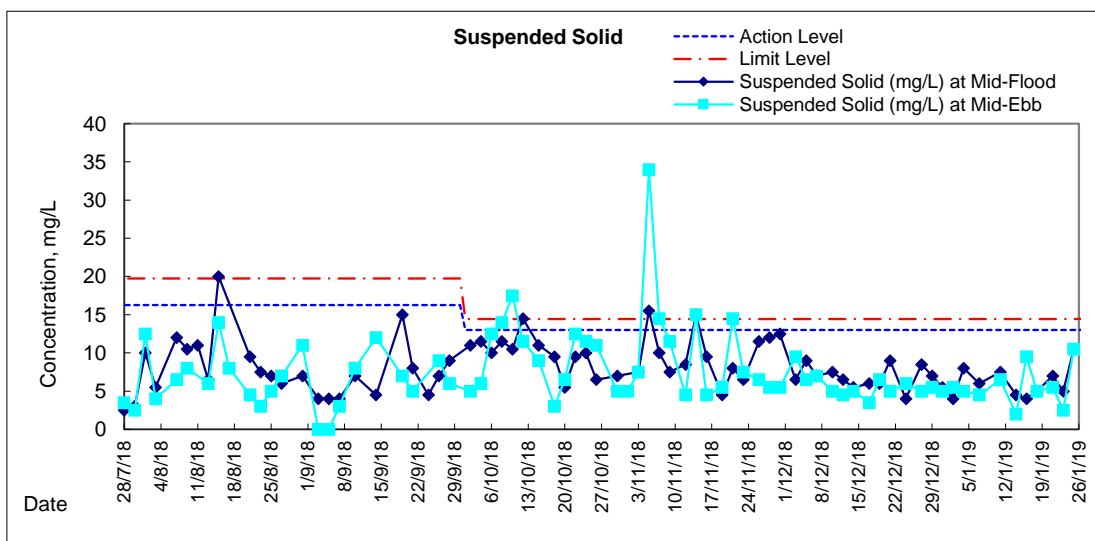
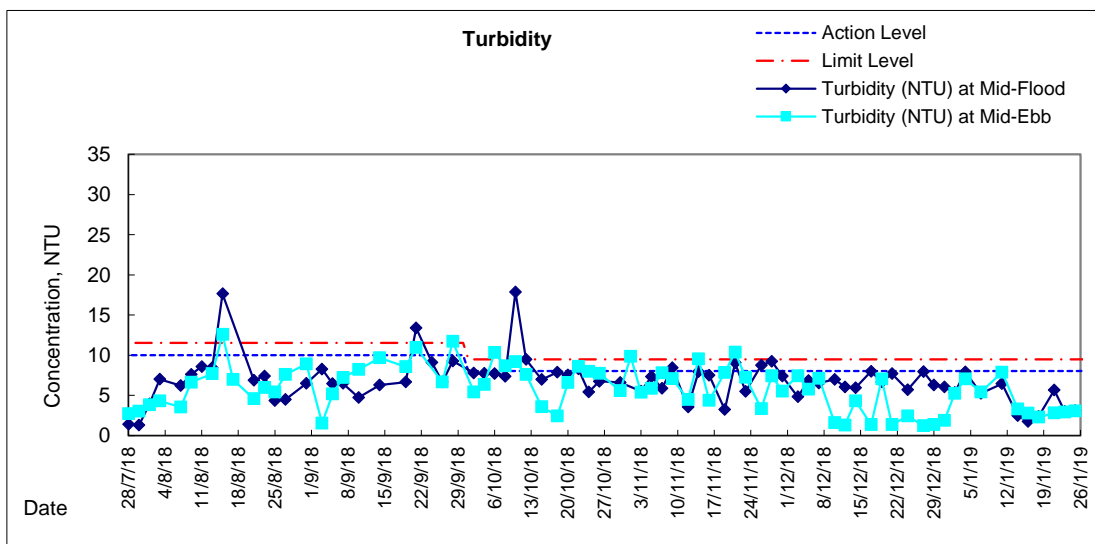
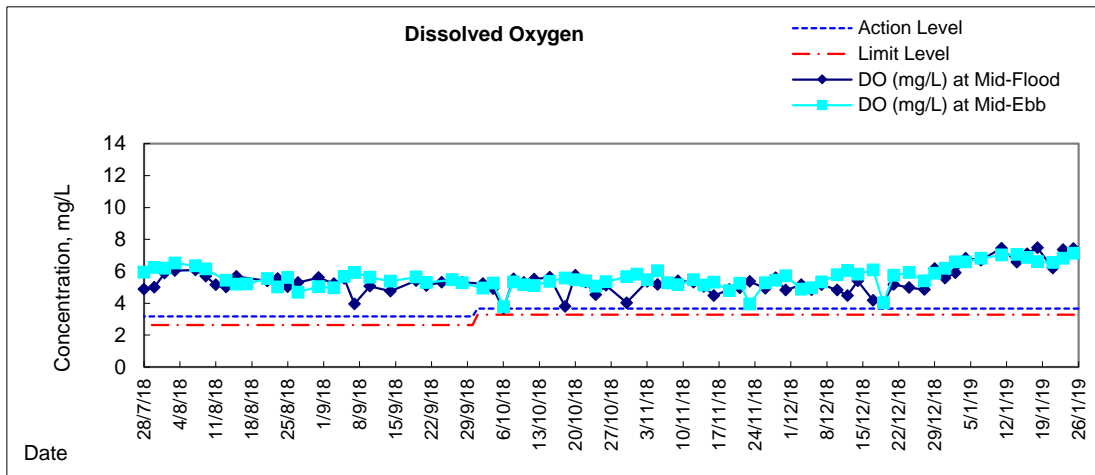
**Water Monitoring Result at WSD19 - Sheung Wan
Mid-Ebb Tide**

Date	Time	Weater Condition	Sampling Depth		Water Temperature		pH			Salinity			DO Saturation		DO		Turbidity		Suspended Solids					
					°C		-			ppt			%		mg/L		NTU		mg/L					
					Value	Average	Value	Average	Value	Average	Value	Average	Value	Average	Value	Average	Value	Average	Value	Average				
27/12/18	2:54	Cloudy	Middle	4.0	20.50	20.50	20.50	8.06	8.07	8.07	32.98	32.98	32.98	71.8	73.8	72.8	5.33	5.48	5.41	1.20	1.24	1.22	5	5.00
	2:55		Middle	4.0	20.50	20.50		8.07	8.07		32.98	32.98		73.1	72.5		5.43	5.38		1.18	1.26		5	
29/12/18	2:45	Cloudy	Middle	4.0	18.10	18.10	18.10	8.04	8.04	8.04	32.70	32.70	32.70	74.6	76.4	76.2	5.60	5.95	5.88	1.63	1.33	1.37	5	5.50
	2:46		Middle	4.0	18.10	18.10		8.04	8.04		32.70	32.70		76.2	77.4		5.93	6.03		1.29	1.24		6	
31/12/18	5:37	Cloudy	Middle	4.0	16.50	16.50	16.50	8.09	8.10	8.10	32.71	32.71	32.71	77.3	77.5	76.9	6.22	6.23	6.19	1.73	1.94	1.88	5	5.00
	5:38		Middle	4.0	16.50	16.50		8.10	8.10		32.71	32.71		77.2	75.7		6.21	6.10		2.03	1.83		5	
2/1/19	23:07	Cloudy	Middle	3.5	18.00	18.00	18.00	8.13	8.13	8.13	32.12	32.12	32.12	82.2	85.3	84.1	6.44	6.69	6.60	5.31	5.22	5.26	5	5.50
	23:08		Middle	3.5	18.00	18.00		8.13	8.13		32.12	32.12		85.8	83.1		6.73	6.52		5.28	5.24		6	
4/1/19	0:35	Cloudy	Middle	4.0	19.20	19.20	19.20	8.29	8.29	8.29	32.31	32.31	32.31	86.4	87.2	86.6	6.58	6.64	6.59	7.19	7.04	7.05	5	5.00
	0:36		Middle	4.0	19.20	19.20		8.29	8.29		32.31	32.31		87.0	85.7		6.62	6.53		7.00	6.98		5	
7/1/19	0:30	Cloudy	Middle	4.0	18.10	18.10	18.10	8.39	8.39	8.39	31.94	31.94	31.95	87.6	86.6	87.1	6.84	6.76	6.81	5.56	5.52	5.43	4	4.50
	0:31		Middle	4.0	18.10	18.10		8.39	8.39		31.96	31.96		87.1	87.2		6.83	6.81		5.44	5.19		5	
9/1/18	1:30	Cloudy	Middle	4.0	18.40	18.40	18.40	8.34	8.34	8.34	32.23	32.23	32.23	88.4	89.1	88.8	6.72	6.77	6.75	5.62	5.60	5.62	3	3.50
	1:31		Middle	4.0	18.40	18.40		8.34	8.34		32.23	32.23		88.7	89.0		6.74	6.76		5.59	5.65		4	
11/1/19	2:20	Cloudy	Middle	4.0	18.90	18.90	18.90	8.60	8.60	8.60	32.34	32.34	32.34	91.4	93.0	91.7	7.01	7.13	7.03	7.96	7.88	7.87	6	6.50
	2:21		Middle	4.0	18.90	18.90		8.60	8.60		32.34	32.34		91.1	91.2		6.98	6.99		7.85	7.80		7	
14/1/19	2:15	Cloudy	Middle	4.0	18.90	18.90	18.90	8.37	8.37	8.37	31.90	31.90	31.90	89.3	92.5	91.6	6.88	7.13	7.06	3.40	3.36	3.30	<2	2.00
	2:16		Middle	4.0	18.90	18.90		8.37	8.37		31.90	31.90		93.3	91.1		7.19	7.02		3.28	3.16		2	
16/1/19	20:32	Cloudy	Middle	4.0	18.10	18.10	18.10	8.56	8.56	8.56	32.18	32.18	32.18	88.3	87.9	88.9	6.87	6.84	6.87	2.93	2.75	2.77	10	9.50
	20:33		Middle	4.0	18.10	18.10		8.56	8.56		32.18	32.18		89.0	90.5		6.72	7.04		2.72	2.69		9	
18/1/19	20:45	Cloudy	Middle	4.0	18.60	18.60	18.60	7.95	7.95	7.95	32.19	32.19	32.19	85.2	86.3	87.8	6.41	6.50	6.61	2.62	2.13	2.29	5	5.00
	20:46		Middle	4.0	18.60	18.60		7.95	7.95		32.19	32.19		89.7	89.8		6.75	6.76		2.23	2.17		5	
21/1/19	23:33	Cloudy	Middle	4.0	18.00	18.00	18.00	7.72	7.72	7.72	31.87	31.87	31.87	84.5	83.8	83.8	6.61	6.55	6.55	2.88	2.86	2.82	6	5.50
	23:34		Middle	4.0	18.00	18.00		7.72	7.72		31.87	31.87		83.5	83.4		6.53	6.50		2.75	2.78		5	
23/1/19	1:15	Cloudy	Middle	4.0	15.90	15.90	15.90	7.76	7.76	7.76	31.04	31.04	31.04	80.4	82.2	83.2	6.59	6.74	6.82	2.42	3.09	2.93	3	2.50
	1:16		Middle	4.0	15.90	15.90		7.76	7.76		31.04	31.04		86.7	83.5		7.11	6.85		3.12	3.09		2	
25/1/19	11:00	Fine	Middle	4.0	19.00	19.00	19.05	7.97	7.97	7.98	31.12	31.12	31.12	93.1	93.7	92.9	7.17	7.18	7.14	3.06	3.08	3.06	11	10.50
	11:02		Middle	4.0	19.10	19.10		7.99	7.99		31.11	31.11		92.1	92.6		7.08	7.12		3.08	3.02		10	

Remarks:
Single underline denotes exceedance over Action Level.
Double underline denotes exceedance over Limit Level.

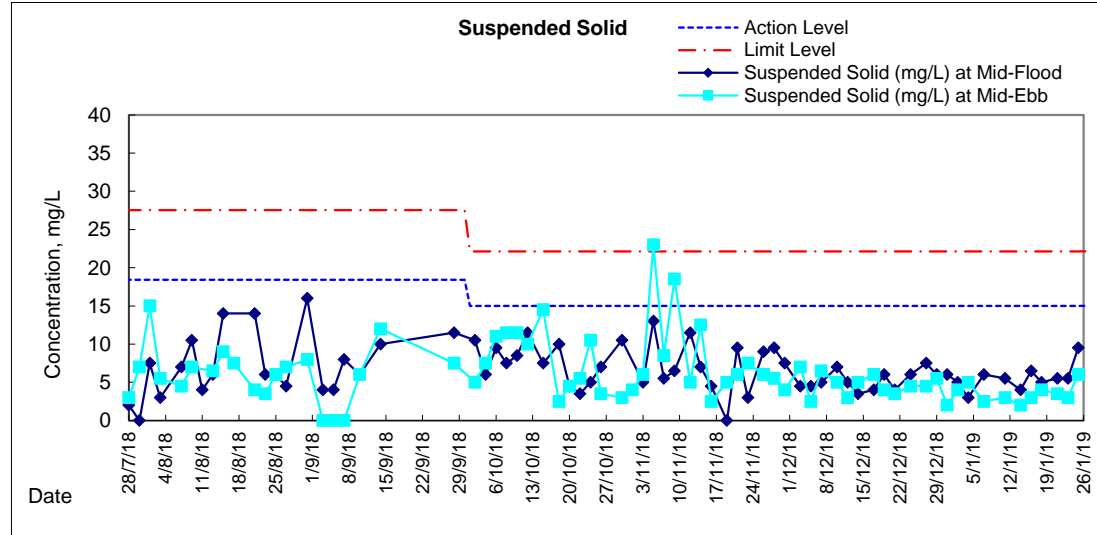
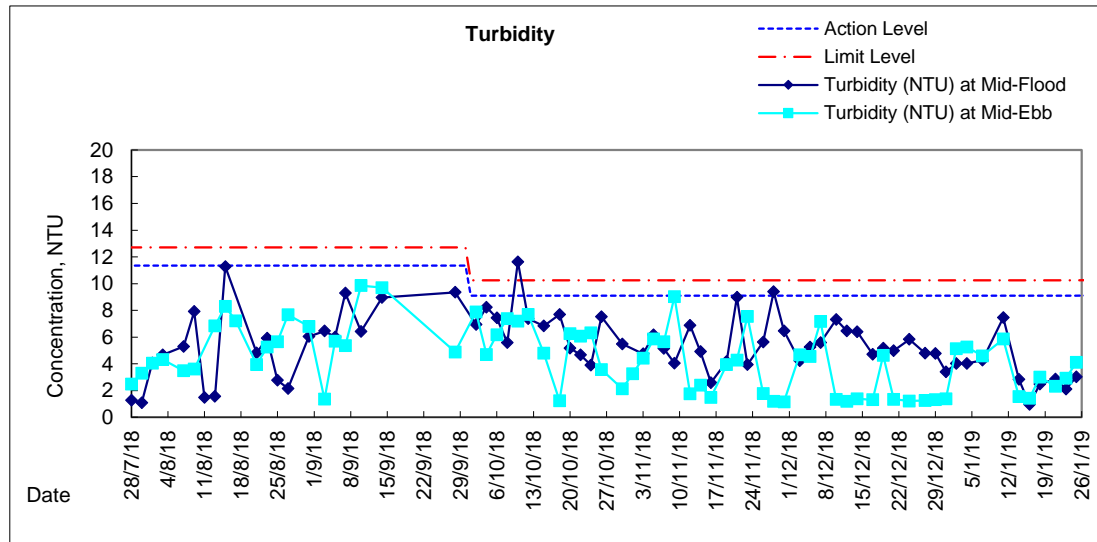
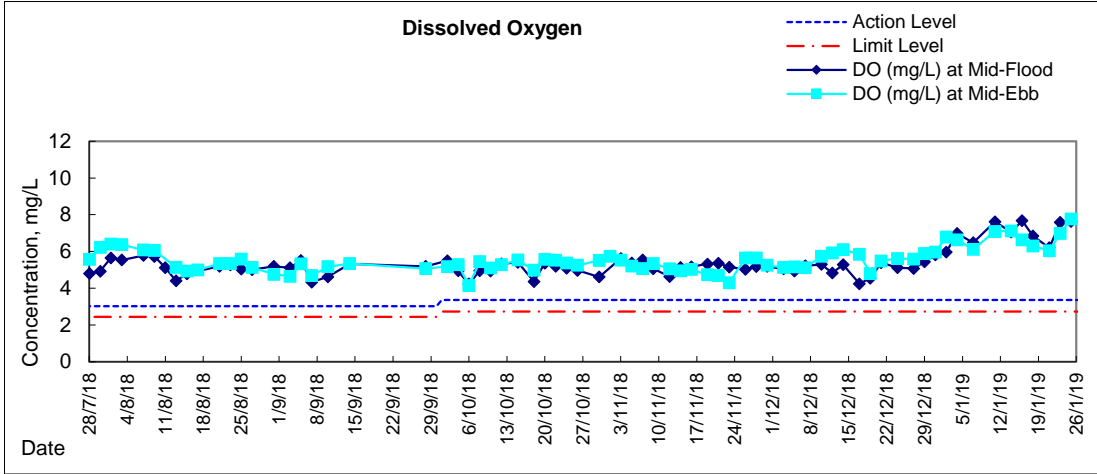


Graphic Presentation of Water Quality Result of WSD19 - Sheung Wan



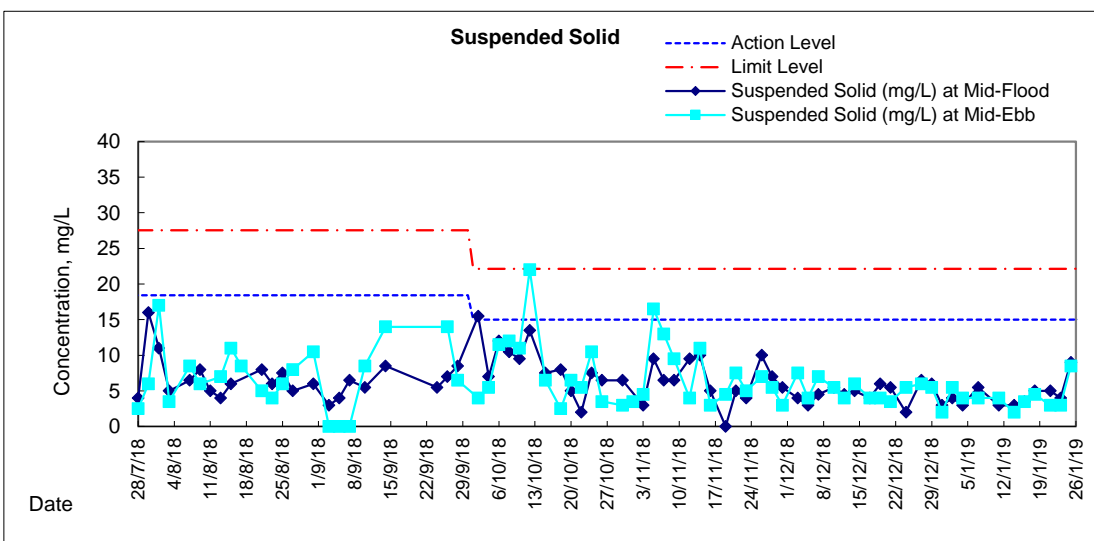
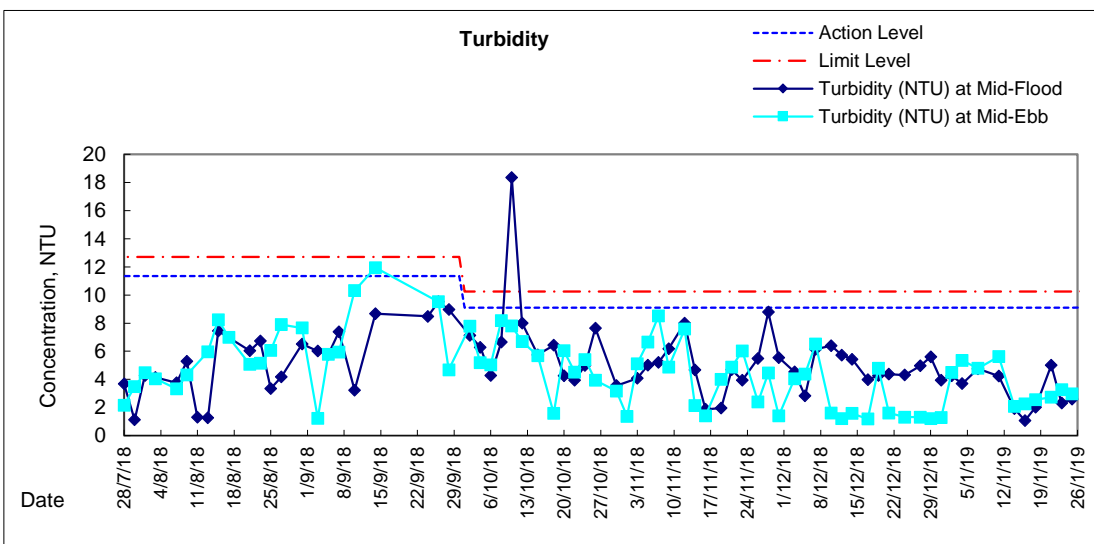
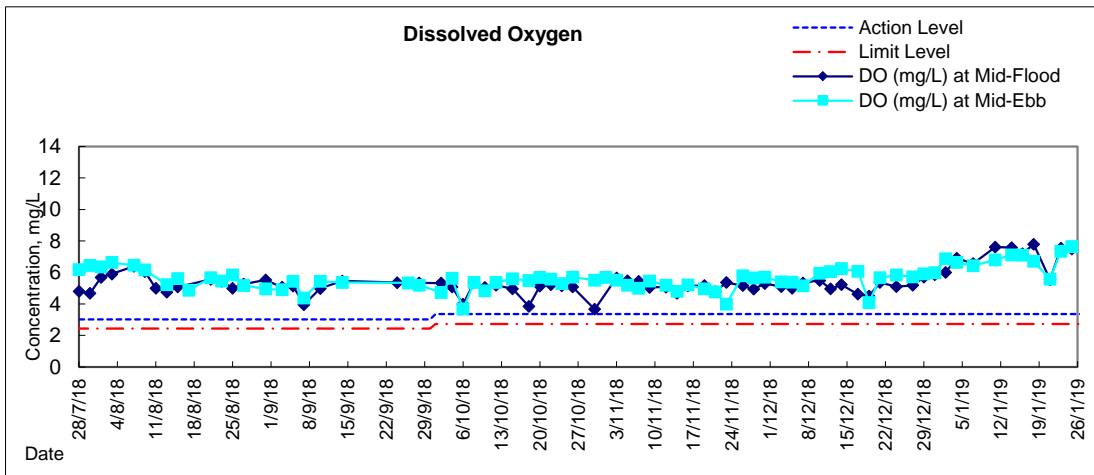


Graphic Presentation of Water Quality Result of C1 - HKCEC



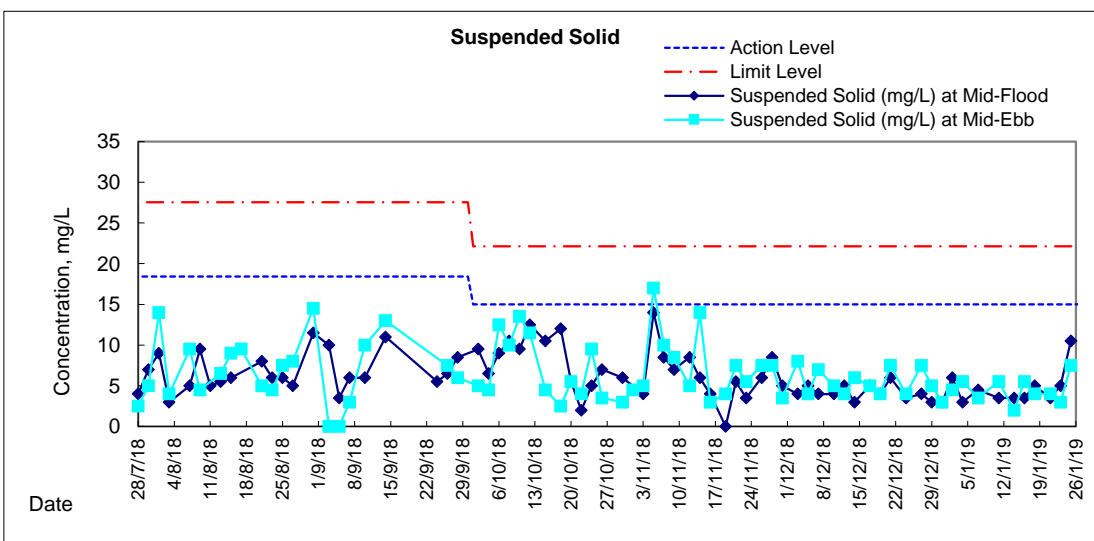
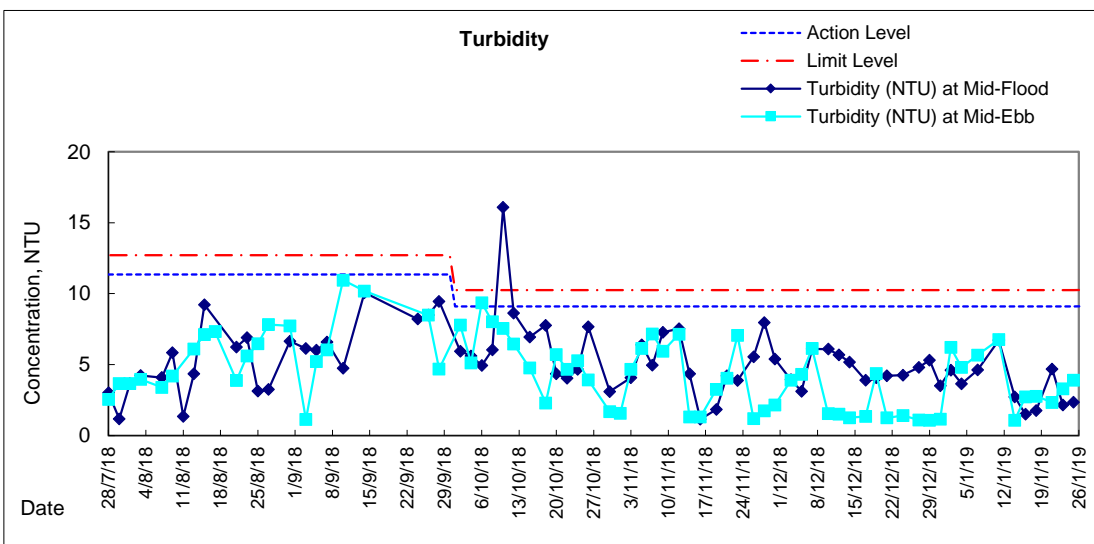
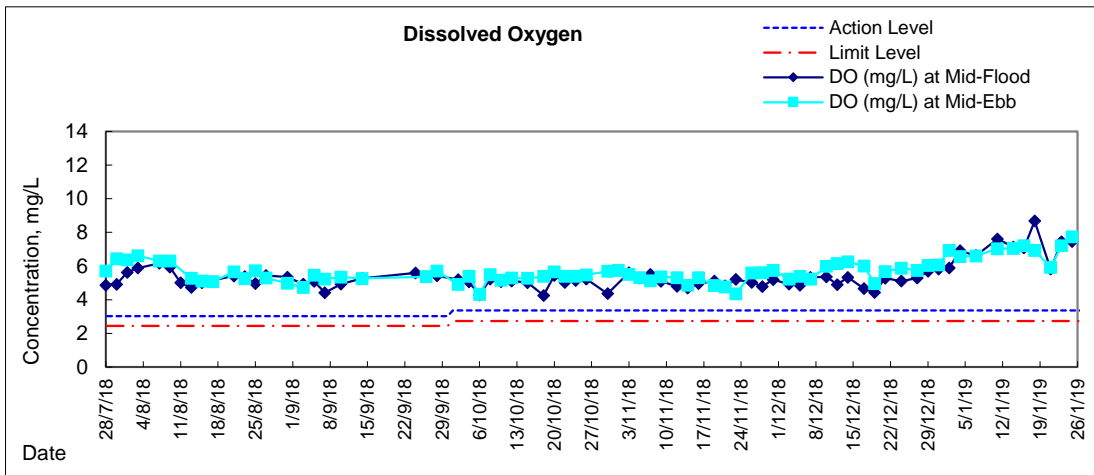


Graphic Presentation of Water Quality Result of P1 - HKCEC Phase I



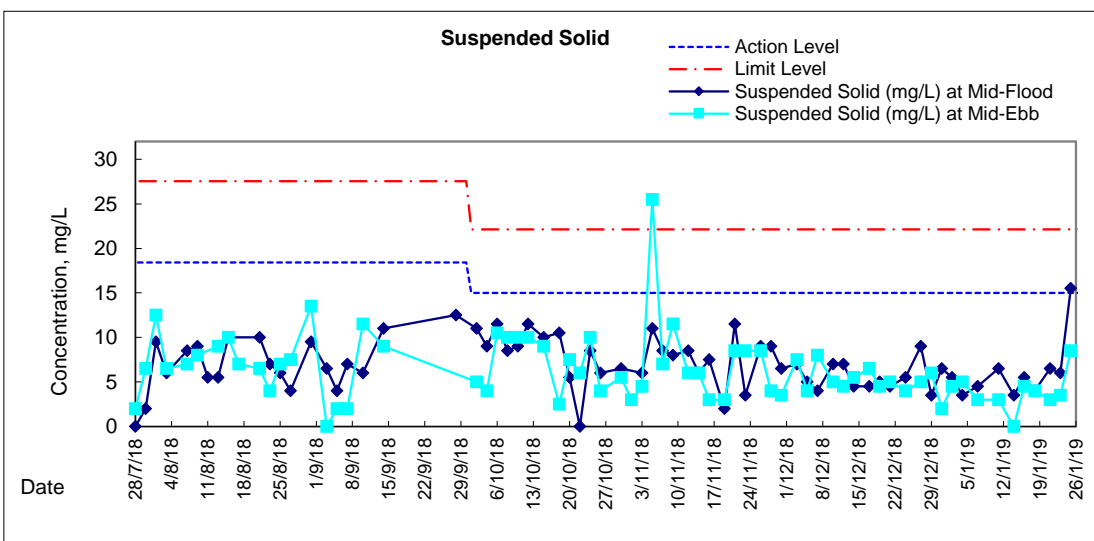
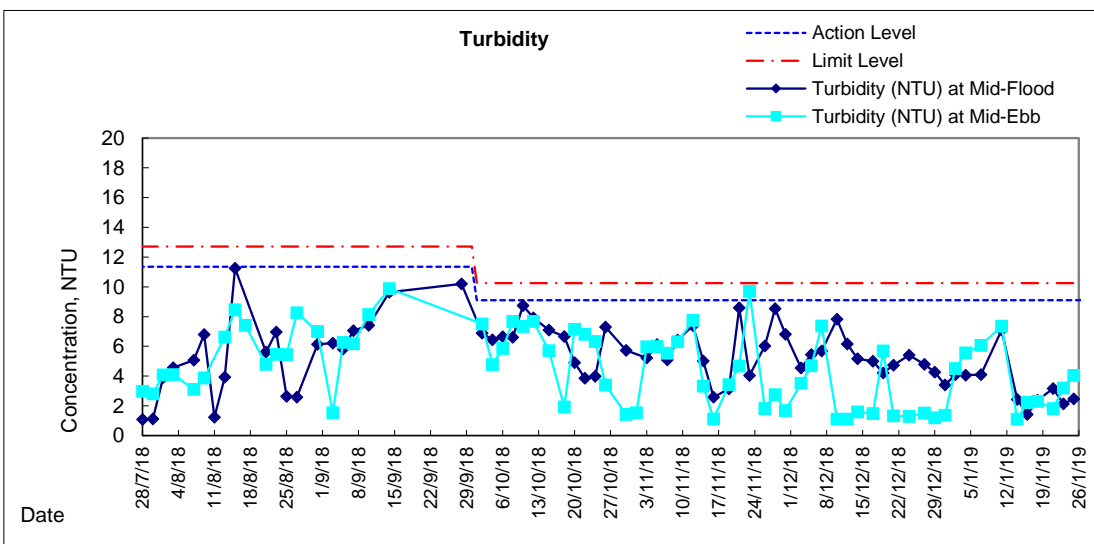
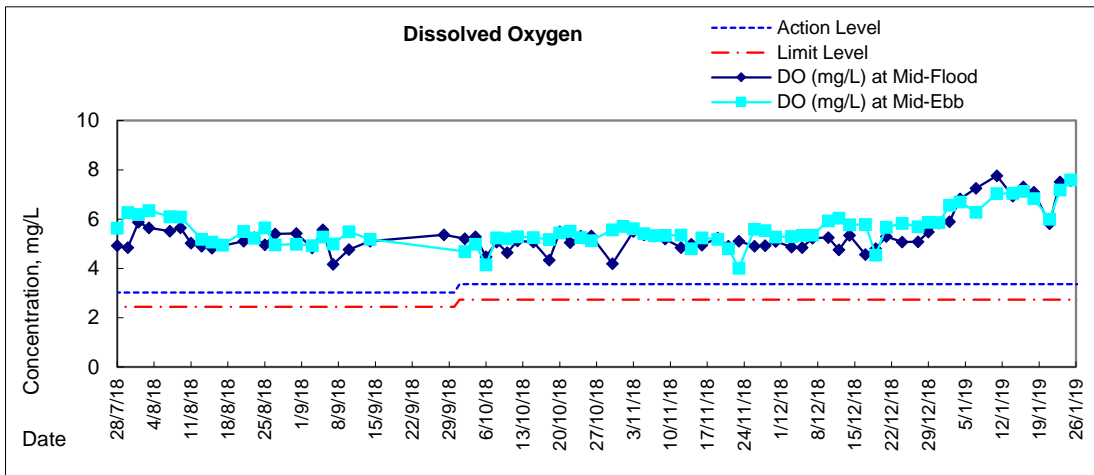


Graphic Presentation of Water Quality Result of P3 - APA



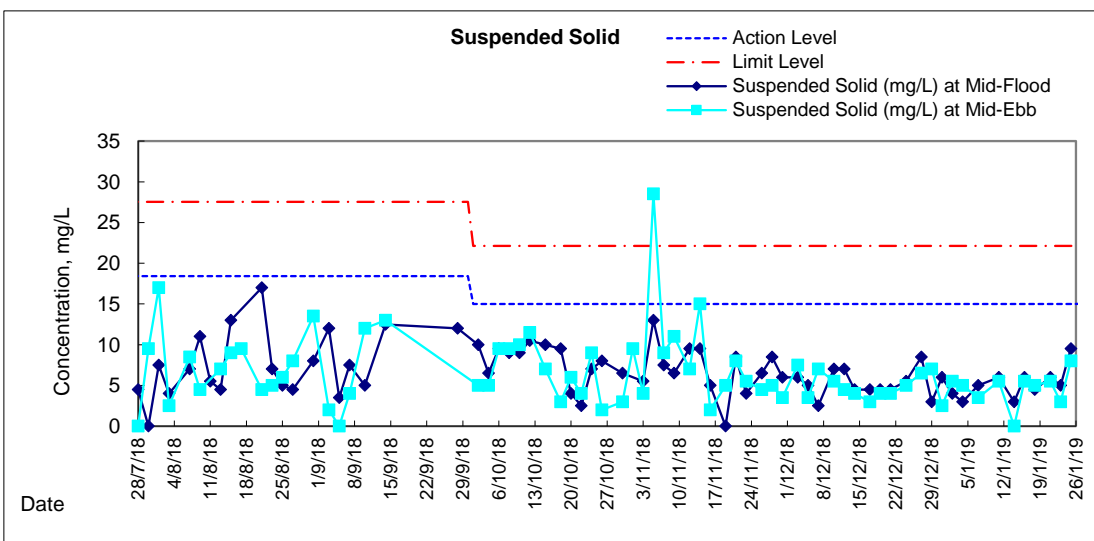
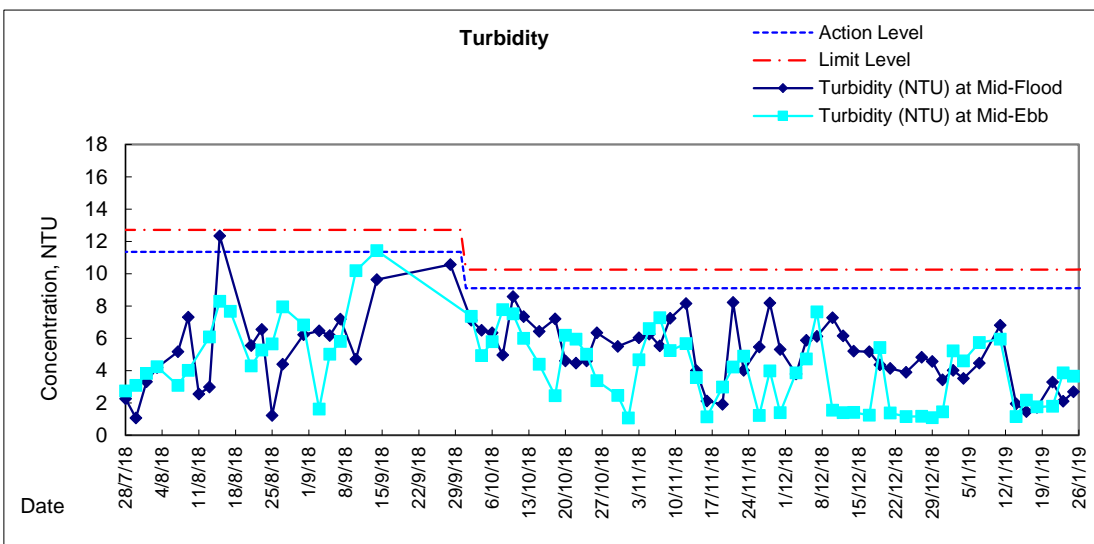
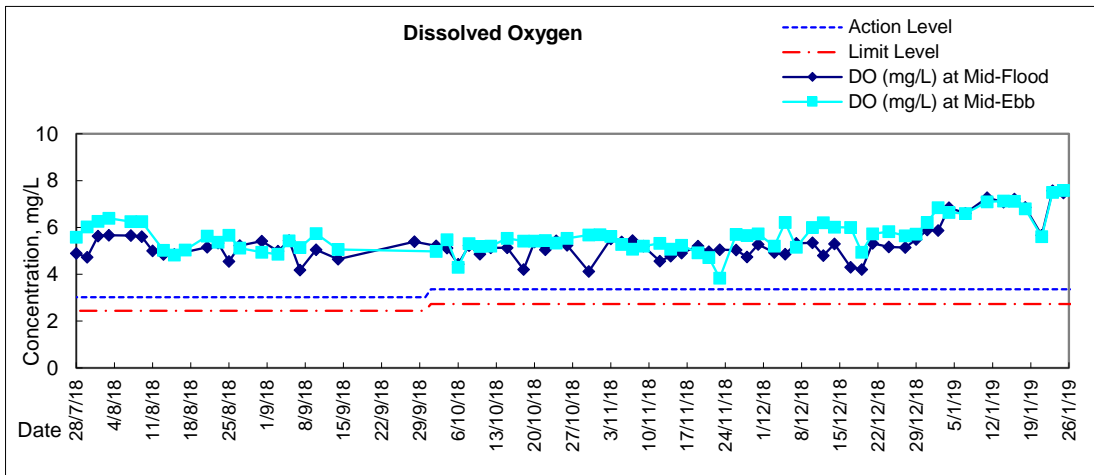


Graphic Presentation of Water Quality Result of P5 - WCT / RT / IT





Graphic Presentation of Water Quality Result of P4 - SOC





Graphic Presentation of Water Quality Result of RW21-P789 - GEC/CRC/SHK

